

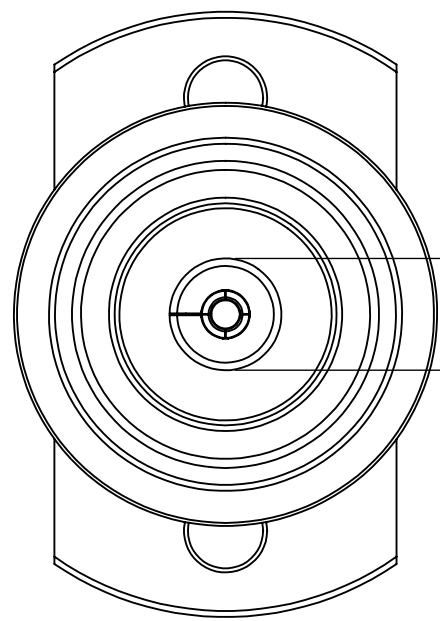
4

3

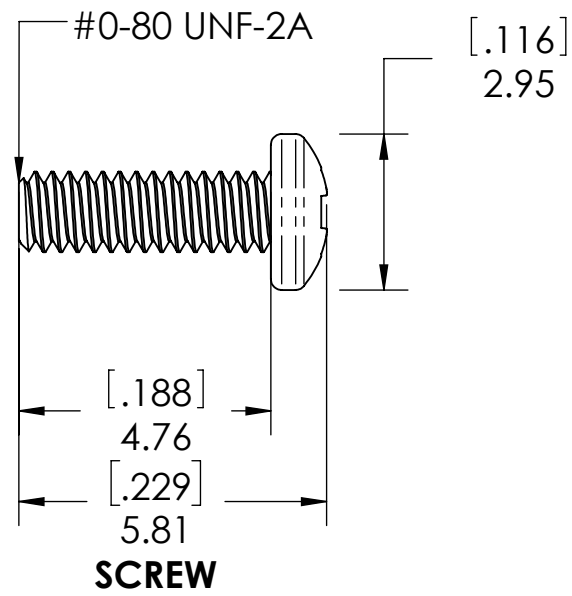
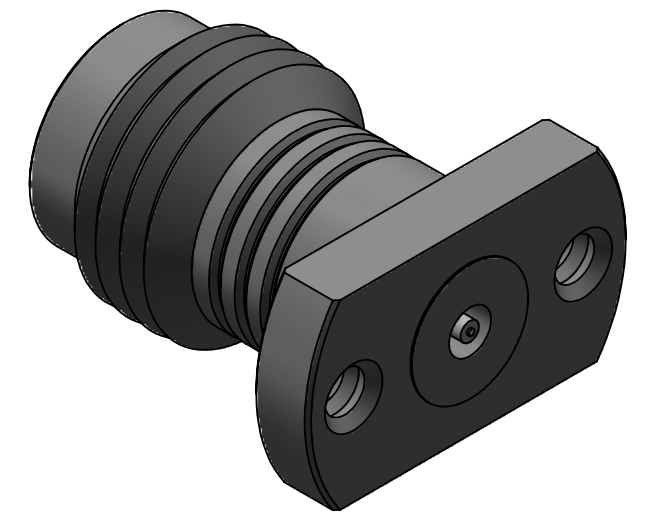
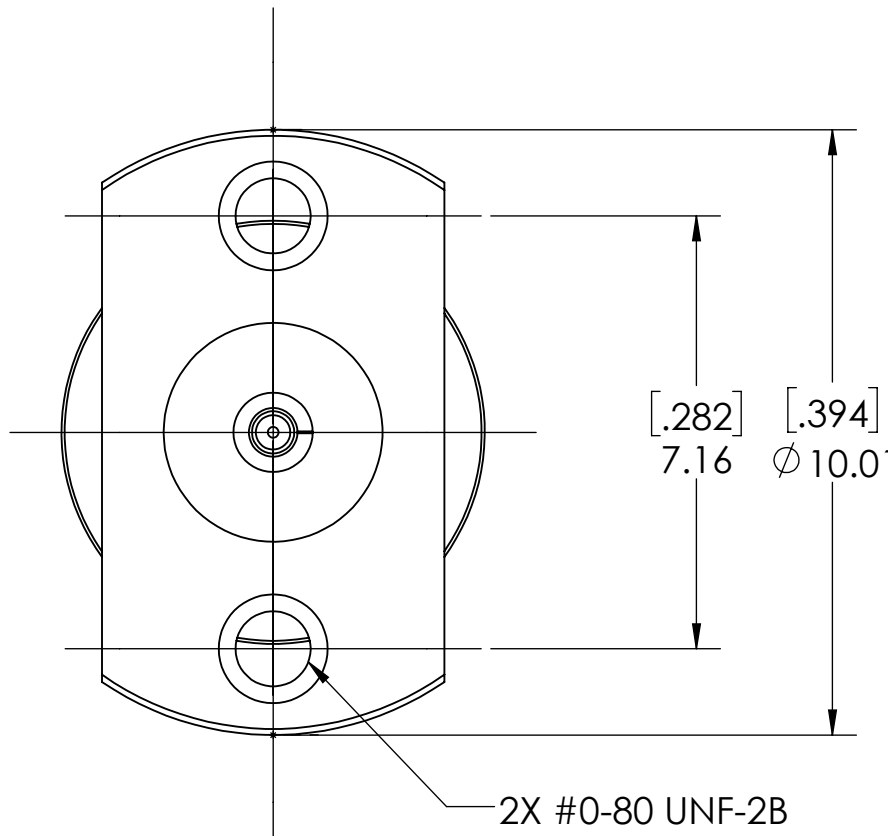
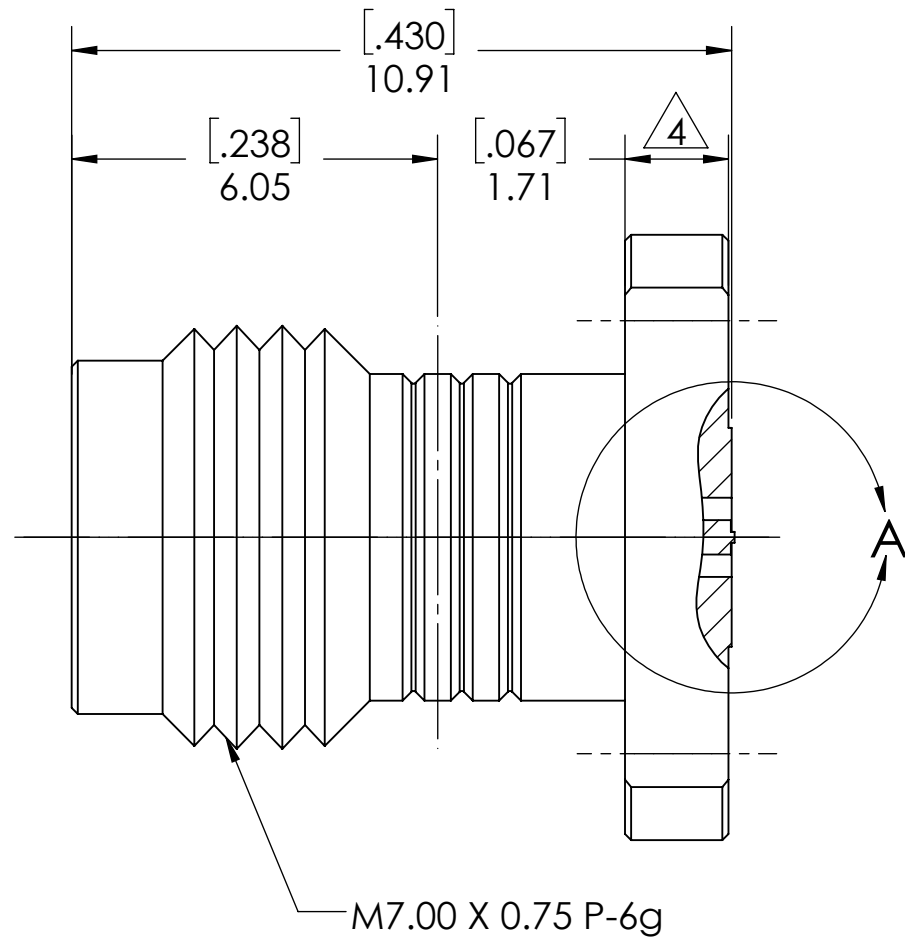
2

1

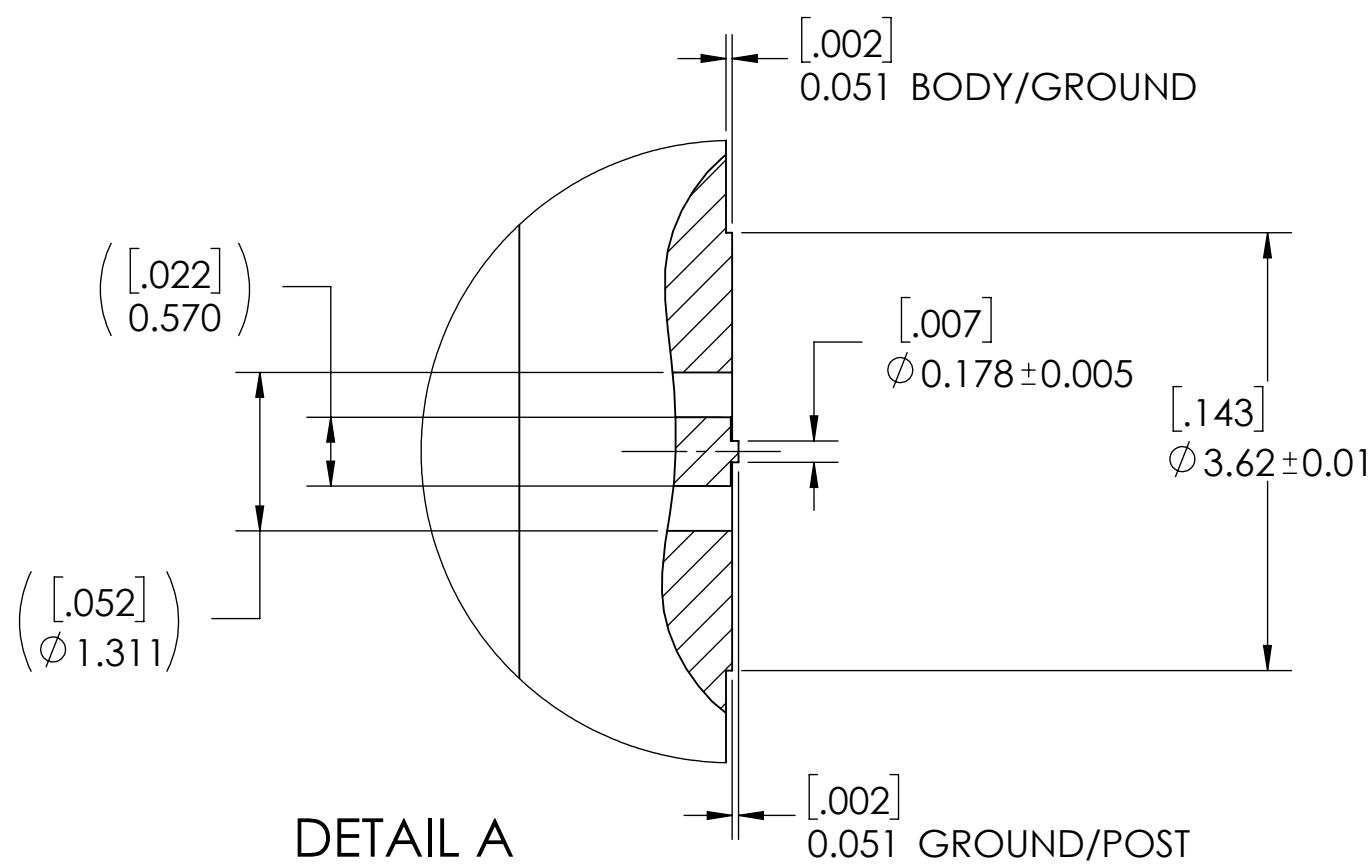
REVISIONS			
REV.	DESCRIPTION	DATE	APPROVED
-	INITIAL RELEASE	11/21/2018	DL
1	ADDED SHEET 2 PCB DEFINITION	2/20/2019	PV
2	UPD PCB (COMMON SL AND CPW)	5/13/2019	PV
4	CHANGED PN, WAS: TMB-V8F2-1L1	1/9/2020	PV
4	CHANGED DIM	1/21/2020	PV
5	UPD TO SHOW VERSIONE DESIGN	7/27/2020	FY
6	ADD MOUNTING SCREWS INFO TO TABLE	9/15/2021	JZ



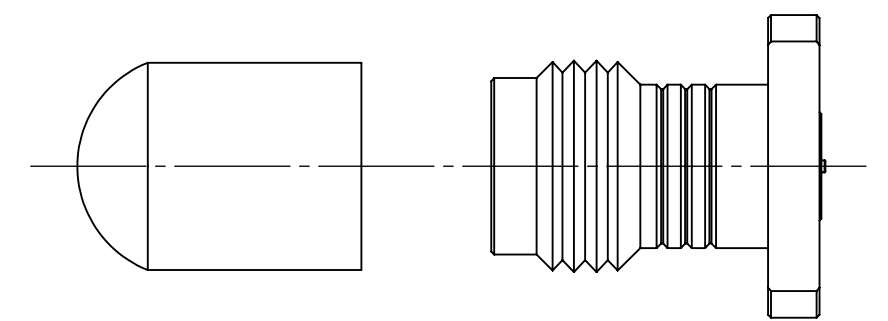
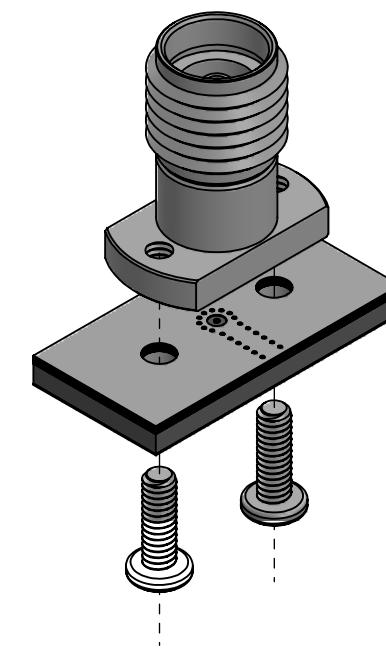
[.073]  
Ø 1.85 ± 0.005



SCREW



DETAIL A  
SCALE 16 : 1



PROTECTION CAP

NOTE(S):

1. These characteristics are typical and for reference.
2. 4V99981010
3. DYH: 59-20004-44050E
4. See sheet 2 for PCB interface definition.

MATERIAL(S):	ELECTRICAL(S):	MECHANICAL(S):	ENVIRONMENTAL(S):
Body: Stainless Steel Center Conductor: Beryllium Copper Insulator: PCTFE, white RoHS Compliant Protective Cap: Soft PVC Color: Green Mounting Screws: Stainless Steel	Impedence: 50 Ohms Nominal Frequency Range: DC to 67 GHz VSWR: 1.30 max at 67 GHz Working Voltage: 500 V RMS max @ Sea Level Dielectric Withstand Voltage: 500 V RMS max. Insulation Resistance: 5000 megaohms min. Contact Resistance: Initial: Center Contact: 3 Milliohms max Outer Contact: 2.5 Milliohms max Insertion Loss: <0.49 db @ 67 GHz	Mating Characteristics: Interface per MIL-STD-348 Force to Engage & Disengage: Torque: 2 inch-pounds max Longitudinal Force: NA Connector Durability: 500 Cycles min. Permeability: Less than 2.0 mu. Center Contact Retention: Axial Force: 6 pounds min. Radial Force: NA	Temperature Range: -55 °C to +85 °C Moisture Resistance: MIL-STD-202, Method 103, Test Condition B Corrosion: MIL-STD-202, Method 101, Test Condition B Vibration: MIL-STD-202, Method 204, Test Condition A Shock: MIL-STD-202, Method 213, Test Condition 1

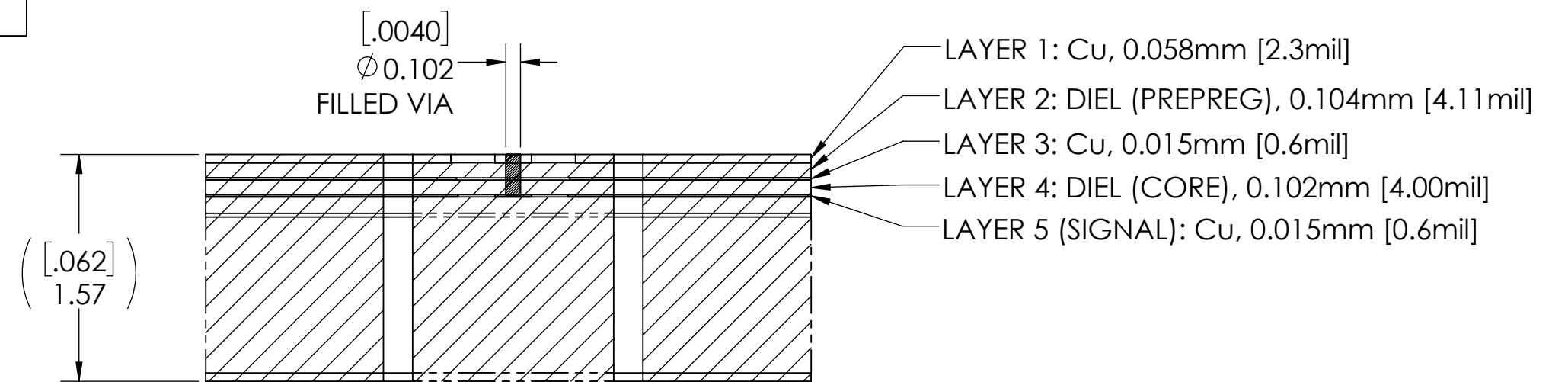
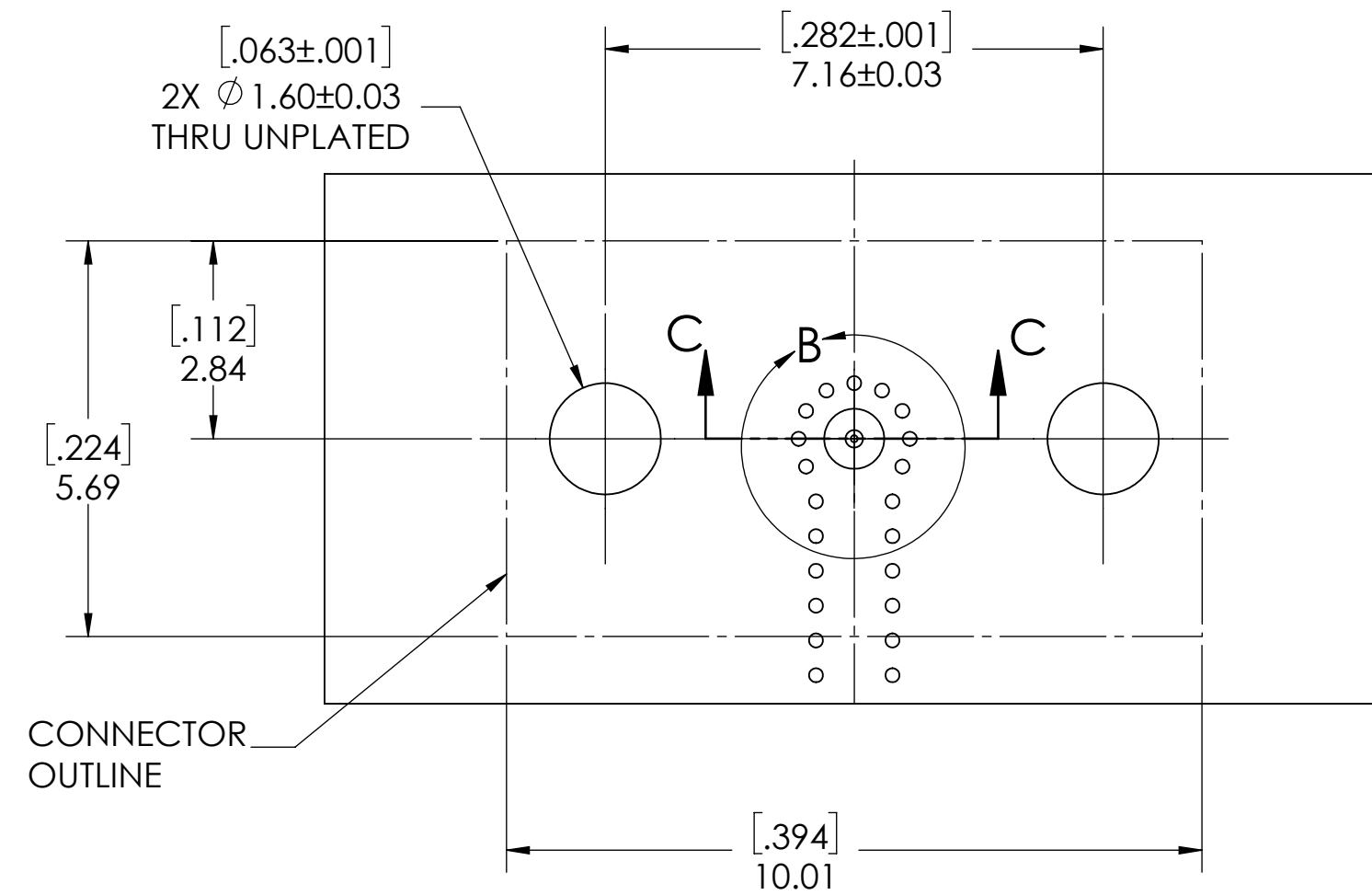
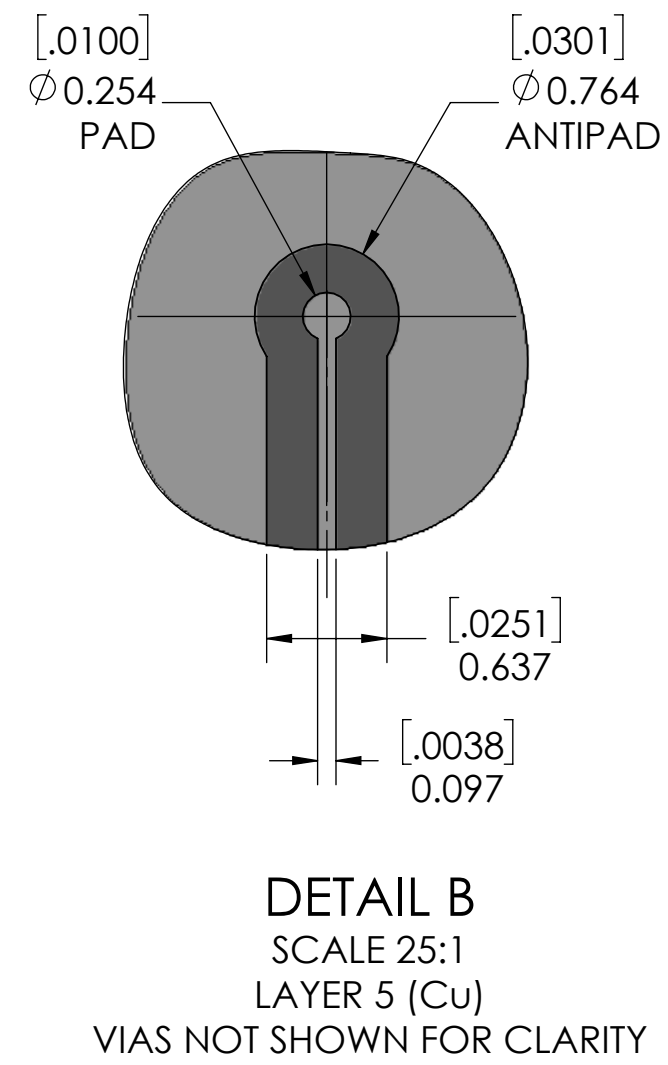
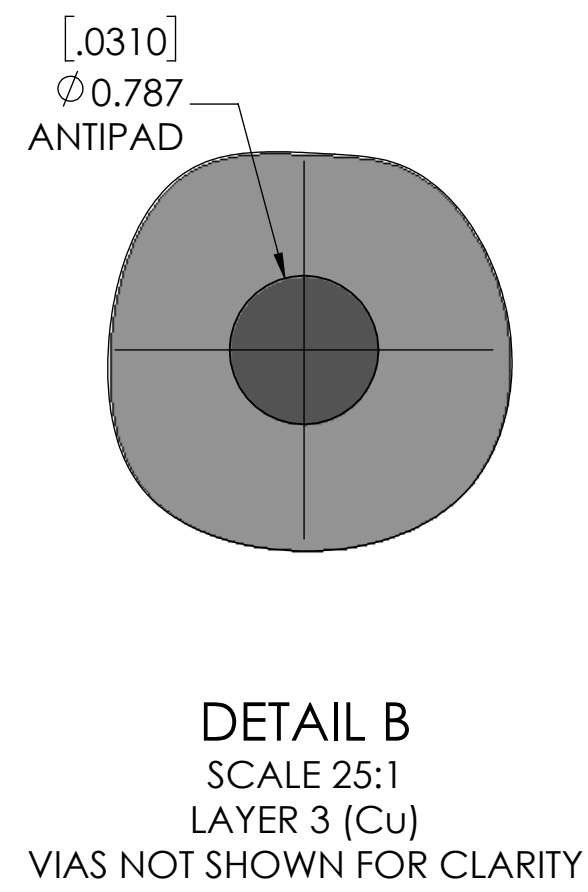
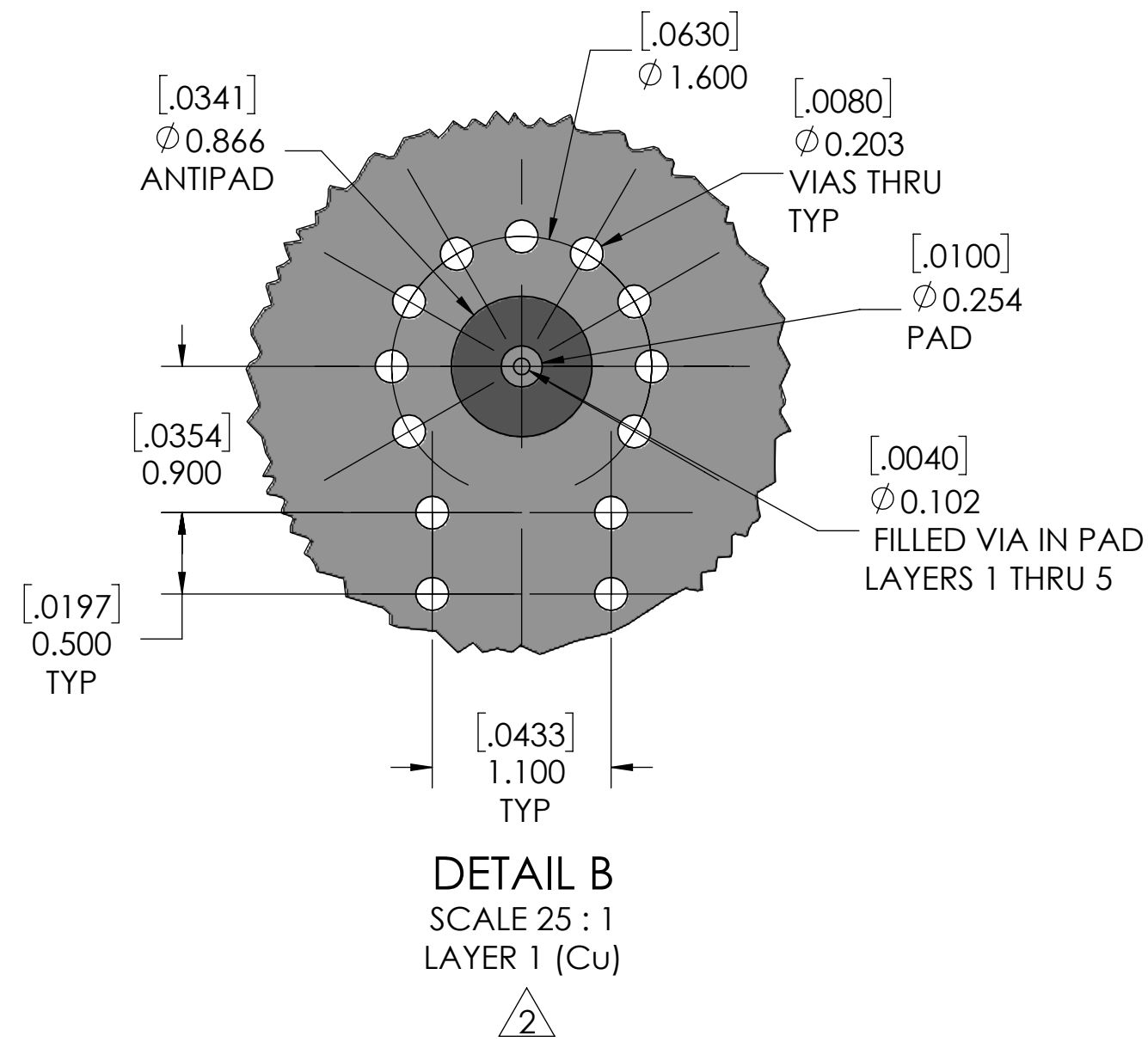
FINISH(ES):	APPLICABLE CARLISLE IT DOCUMENTS	TOLERANCES AND NOTES	APPROVAL	INITIALS	DATE																																				
Body: Passivated Center Conductor: Gold Plating Mounting Screws: Passivated	<table border="1"> <thead> <tr> <th>WORK STANDARD</th> <th>PROD INSTRUC</th> <th>ASSY INSTRUC</th> </tr> </thead> <tbody> <tr> <td>NA</td> <td>NA</td> <td>NA</td> </tr> </tbody> </table>	WORK STANDARD	PROD INSTRUC	ASSY INSTRUC	NA	NA	NA	EXCEPT AS NOTED THIRD ANGLE PROJECTION SCALE 8:1 DIMENSIONS ARE IN [INCHES] MM ANGLES ± 2° .XX DECIMALS ±.063 .XXX DECIMALS ±.01	<table border="1"> <tr> <td>DRAWN BY</td> <td>DL</td> <td>11/21/2018</td> </tr> <tr> <td>CHECKED BY</td> <td>KM</td> <td>11/21/2018</td> </tr> <tr> <td>DESIGN ENG</td> <td></td> <td></td> </tr> <tr> <td>APPR BY</td> <td></td> <td></td> </tr> </table>	DRAWN BY	DL	11/21/2018	CHECKED BY	KM	11/21/2018	DESIGN ENG			APPR BY																						
WORK STANDARD	PROD INSTRUC	ASSY INSTRUC																																							
NA	NA	NA																																							
DRAWN BY	DL	11/21/2018																																							
CHECKED BY	KM	11/21/2018																																							
DESIGN ENG																																									
APPR BY																																									
<table border="1"> <tr> <td colspan="6" style="text-align: center;"><b>CARLISLE</b></td> </tr> <tr> <td colspan="6" style="text-align: center;">INTERCONNECT TECHNOLOGIES</td> </tr> <tr> <td colspan="6" style="text-align: center;">Dongguan City, Guangdong P.R. China 523533</td> </tr> <tr> <td colspan="6" style="text-align: center;">TITLE 1.85mm FEMALE 2 HOLE FLANGE POST CONTACT</td> </tr> <tr> <td>SCALE 8:1</td> <td colspan="2">SUB-DIRECTORY/OUTLINE/</td> <td colspan="2">SHEET 1 OF 2</td> <td>REV. 6</td> </tr> <tr> <td>SIZE C</td> <td colspan="2">DRAWING NO. 4</td> <td colspan="2">TMB-V8F2-XL1</td> <td></td> </tr> </table>						<b>CARLISLE</b>						INTERCONNECT TECHNOLOGIES						Dongguan City, Guangdong P.R. China 523533						TITLE 1.85mm FEMALE 2 HOLE FLANGE POST CONTACT						SCALE 8:1	SUB-DIRECTORY/OUTLINE/		SHEET 1 OF 2		REV. 6	SIZE C	DRAWING NO. 4		TMB-V8F2-XL1		
<b>CARLISLE</b>																																									
INTERCONNECT TECHNOLOGIES																																									
Dongguan City, Guangdong P.R. China 523533																																									
TITLE 1.85mm FEMALE 2 HOLE FLANGE POST CONTACT																																									
SCALE 8:1	SUB-DIRECTORY/OUTLINE/		SHEET 1 OF 2		REV. 6																																				
SIZE C	DRAWING NO. 4		TMB-V8F2-XL1																																						

4

3

2

1



PCB LAYOUT  
(FOR REFERENCE ONLY)

SECTION C-C  
SCALE 25 : 1  
PCB LAYER DEFINITION

SCALE	SUB-DIRECTORY/		SHEET 2 OF 2
10:1			
SIZE	CAGE CODE	DRAWING NO.	REV.
C		<b>TMB-V8F2-XL1</b>	6