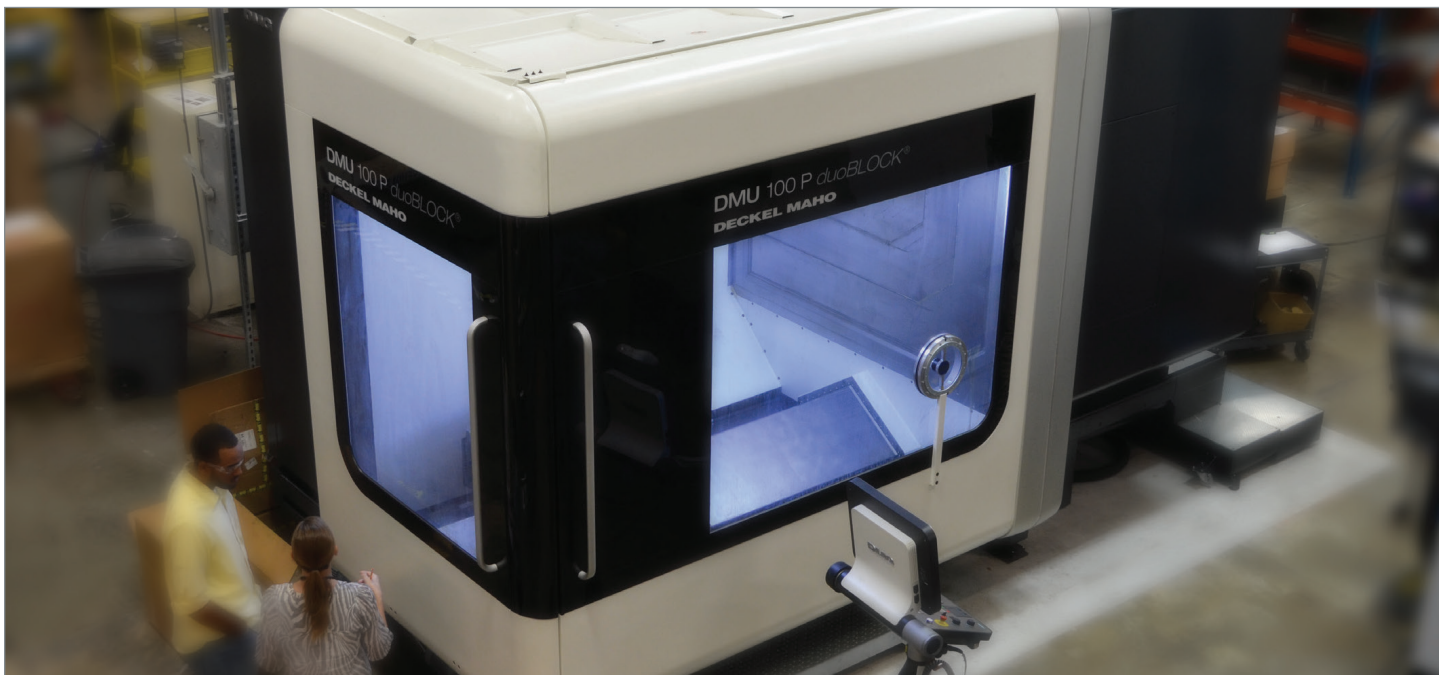


## 5-Axis Machining

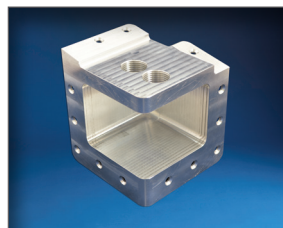


### INTRODUCTION

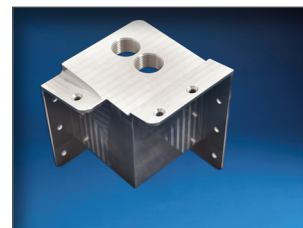
Carlisle Interconnect Technologies (CarlisleIT) provides state-of-the-art 5-axis CNC machining capabilities to efficiently fabricate even the most complicated structural components. Work pieces up to 4,500 lbs can be accommodated and complex lofted surface geometries are mastered with 3D models using the MasterCAM programming software. Having the 5-axis machine as an in-house capability allows CarlisleIT to dramatically streamline the production of complex components, thus reducing the amount of time spent developing complex fixtures and performing multiple set-ups on the work piece.

### MasterCAM

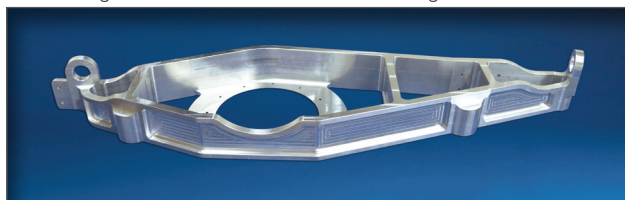
The use of the latest 3D programming software from MasterCAM for the machine centers permits CarlisleIT to tool and cut directly from 3D design models in a variety of formats. Our engineering staff produces detailed 3D designs for every part which can be used to virtually plan the set-up and tooling before the first chips are made. Customers can also furnish their own 3D models in Pro/Engineer, CATIA, Solidworks, STEP, or IGES formats to allow efficient definition of complex part geometries.



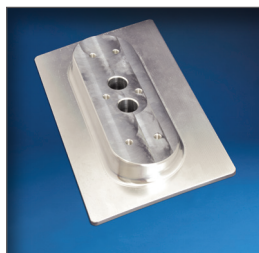
A350 Fitting



A350 Fitting



A380 Support Bridge



737 Antenna Adapter



A380 Fitting