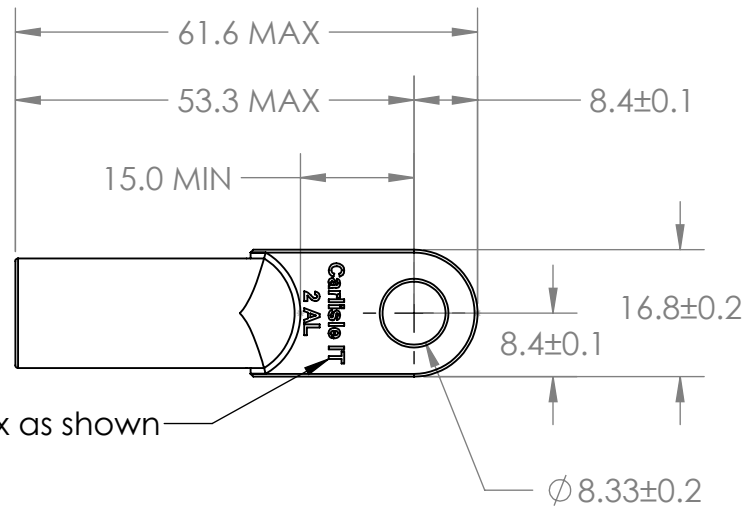
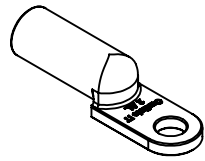
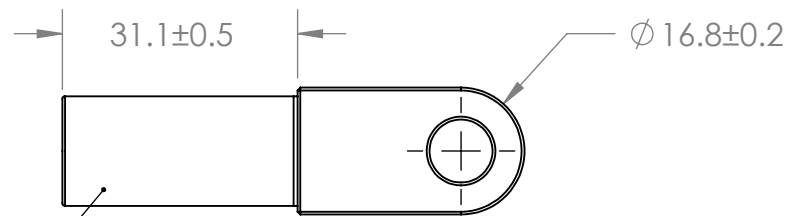
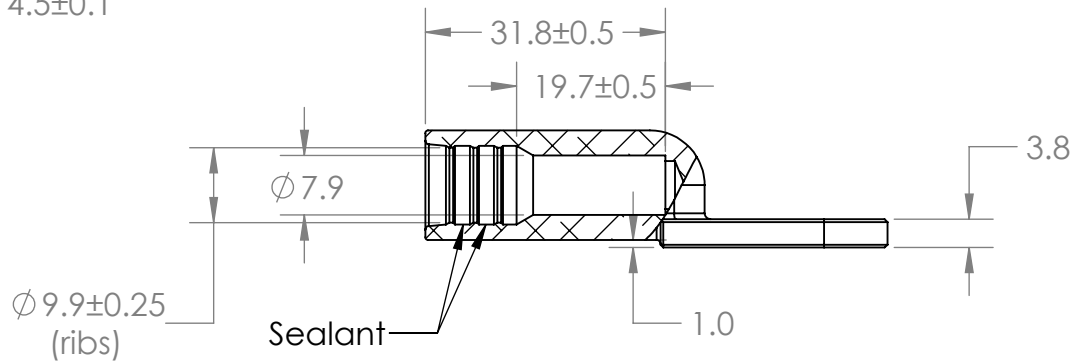
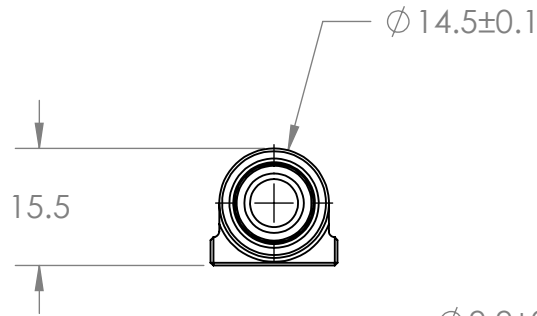


Mass = 14.8g Max



Legend Approx as shown



Dielectric Coating

NOTE:
1. This Aluminum lug is terminated by CIT Crimp Die P/N 999-63006-200.

| MAT'L CODE | MATERIAL DESCRIPTION | FIN CODE | FINISH DESCRIPTION | REV | E.C.O. NO. | DATE | APPR | DRAW | ENG. | DESCRIPTION | PG. 1 OF 1 |
|------------|----------------------|----------|--------------------|-----|------------|-----------|------|------|------------|--|-------------------------------|
| | ALUMINUM | | NICKEL | | | | | | | DESIGN, CONFIGURATION AND MECHANICAL FEATURES REVEALED ON THIS DRAWING ARE THE SOLE PROPERTY OF TENSOLITE A CARLISLE COMPANY AND ARE NOT TO BE DISCLOSED TO OTHER PARTIES WITHOUT EXPRESS CONSENT AND APPROVAL OF TENSOLITE. | |
| | | | | IR | ORIGINATED | 2/25/2016 | MB | WLA | 09/10/2014 | Tensolite A CARLISLE Company 100 Tensolite Dr. St. Augustine Fl. 32092 | FSCM. 92607 NO. 695-18102-001 |

DIMENSIONS IN INCHES
THIRD ANGLE PROJECTION
TOLERANCES UNLESS OTHERWISE SPECIFIED
ANGLES ±2°
WHOLE NUMBERS ±0.5
One Place Decimals ±0.25
Two Place Decimals ±0.10