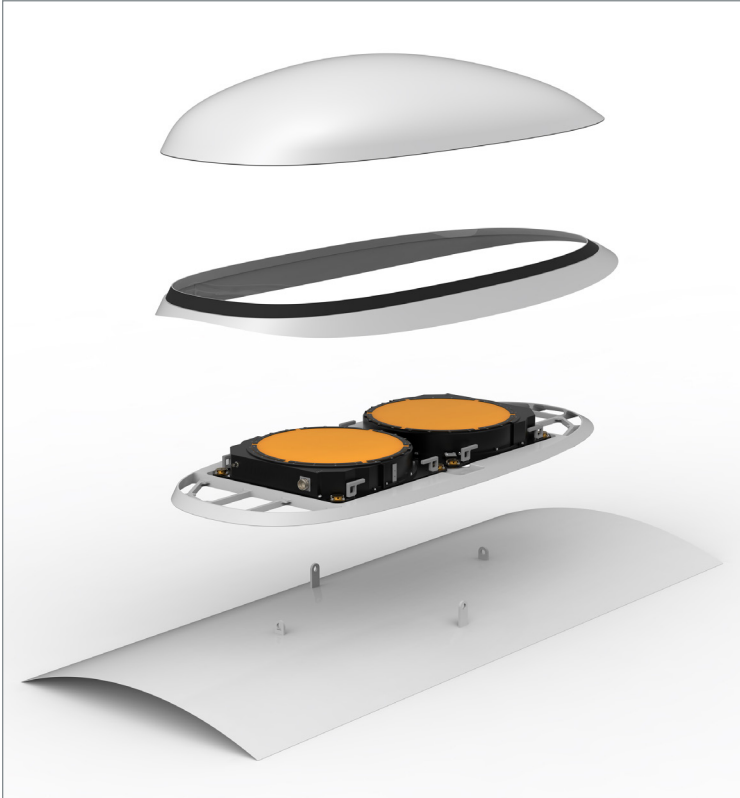


# FlightGear™ Ka1717 Satcom Installation

## THE FUTURE OF CONNECTIVITY



Carlisle Interconnect Technologies (CarlisleIT), in partnership with ThinKom Solutions and Saint Gobain Performance Plastics, offers a complete solution for installation of the ThinAir Ka1717 Satcom System. Our next generation adapter plate solution leverages our extensive experience with ARINC 791 / 792 and fulfills the need for standardized, compact and lightweight installation. The optimized radome and low profile installation, in compliance with OEM guidance, offers high performance and overall lower cost of ownership. Installation packages are available for regional jet fleets and can be adapted for other commercial, VVIP and special missions applications. Details of available certifications, in process engineering, and customizations are always expanding and can be furnished upon request.

Improve your speed-to-market with CarlisleIT's complete Ka1717 Satcom Installation package, which includes the integrated adapter plate, fairing, radome, and all internal structural and electrical provisions kits required for installations on regional jet aircraft.

FlightGear™ Ka1717 Outside Aircraft Equipment Installation

FEATURES	BENEFITS
Available in Ka, Ku, and Ka/Ku	<ul style="list-style-type: none"> <li>Reduces radome development time to market and drives lower-cost solution</li> </ul>
Adapter plate may be customized to match other payload configurations	<ul style="list-style-type: none"> <li>Existing SATCOM antenna designs can be accommodated, saving both time and money</li> </ul>
ARINC 792 SATCOM System Installation compliant	<ul style="list-style-type: none"> <li>Adaptable to current and future antenna technology upgrades</li> <li>Common adapter plate for all airframe types. Enables full-fleet installation with common part numbers, maintenance procedures, and spares fulfillment</li> <li>Standard interface to ensure future flexibility</li> </ul>
Optimized aerodynamic profile	<ul style="list-style-type: none"> <li>Lightweight and compact in size and curvature decreases drag impact for airline fleets, increases flight time, minimizes operating cost</li> </ul>
Simplified OAE Installation Design	<ul style="list-style-type: none"> <li>No match drilling, no pre-loading, no shimming required</li> </ul>

# FlightGear™ Ka1717 Satcom Installation

## INSTALLATION KITS

Installation kits include the following standard parts:

- » Ka-band radome
- » Universal adapter plate
- » Aerodynamic Fairing to match fuselage profile
- » External fittings for adapter plate mounting
- » Internal intercostal structures for adapter plate mounting

## KIT WEIGHTS

Installation Components	CRJ700/900*	
	lbs	kg
Ka1717 Adapter Plate with Fairing	42.0	19.1
Radome	32.0	14.5
Structural Provisions Kit	15.0	6.8
Interior Harness, Circuit Breakers, and Routing Parts	6.8	3.1
MODMAN Tray	3.2	1.4

\*Please consult for additional model details

## TURNKEY PACKAGES

Carlisle Interconnect Technologies can also provide turnkey packages, including:

- » Fuselage penetrations for cables or waveguides
- » Semi-hermetic feedthrough connectors
- » Harnesses and RF cables for SATCOM system installation
- » Interior installation structures, including racks and avionics trays
- » Provisions and harnesses for Cabin Wi-Fi system installation
- » System integration design
- » Certification via FAA, EASA, or regional authority
- » Recurring shipment approvals on FAA Form 8130-3

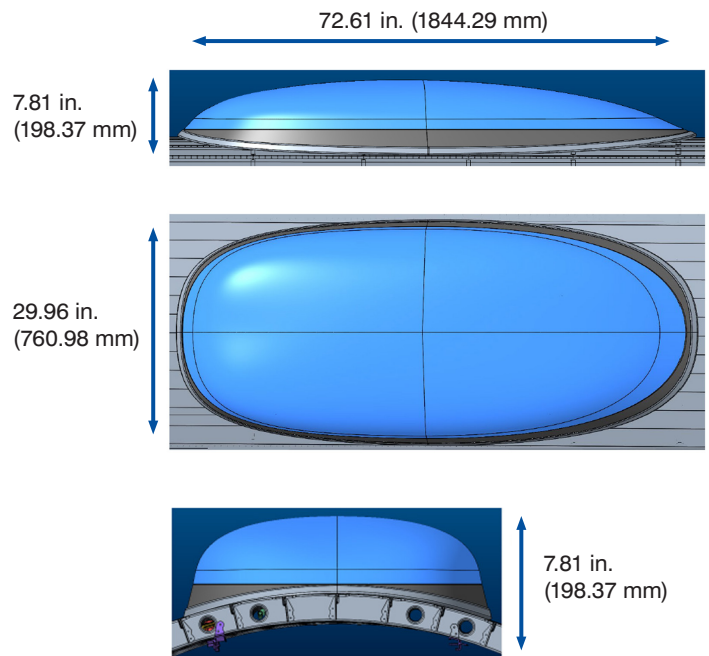
## SUGGESTED APPLICATIONS

- » ARINC 791 compliant installations
- » Ka-band, Ku-band, or Ka/Ku SATCOM system installations
- » Regional Jet fleets, Low-Cost Carriers(LCC), VVIP, or Special Missions applications

## TECHNICAL DATA

- » 3D models
- » Outline and interface drawings
- » Decompression analysis
- » Bird strike test report
- » Lightning test report
- » Airframe-specific structural substantiation
- » Airframe-specific aerodynamic analysis
- » Detailed kit list
- » Onsite installation engineering support
- » Aircraft maintenance manual supplements

## OUTLINE DIMENSIONS



See CarlisleIT's line of IFE, Connectivity & Interiors products at:  
[CarlisleIT.com/markets/commercial-aerospace/ifeci](http://CarlisleIT.com/markets/commercial-aerospace/ifeci)

+1 (800) 327-9473  
[Sales@CarlisleIT.com](mailto:Sales@CarlisleIT.com)