

This print and associated documents and the contained information are the confidential property of ELECTRONIC CABLE SPECIALISTS. Disclosure of, and/or reproduction of, all or part thereof or manufacture of any part from information contained on this print not specifically permitted by ELECTRONIC CABLE SPECIALISTS in writing is forbidden.

DWG NO. 6290 SH 1 REV. A

REVISIONS					DATE	APPROVED
4612			N/C	RELEASED FOR FULL PRODUCTION.	10/27/96	K RAIHALA
5328	P/L F/D D3	A		CHNG'D ITEM 14 QTY WAS 8 ADDED 4 PLENUM SCREWS CHNG'D CALLOUT WAS 14 8X ADDED NOTE 9	10/8/99	MJB PS
9824						

D

C

B

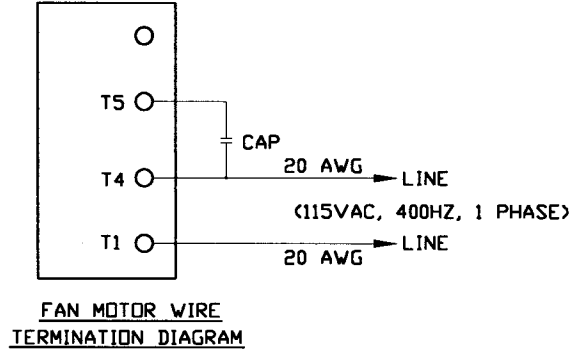
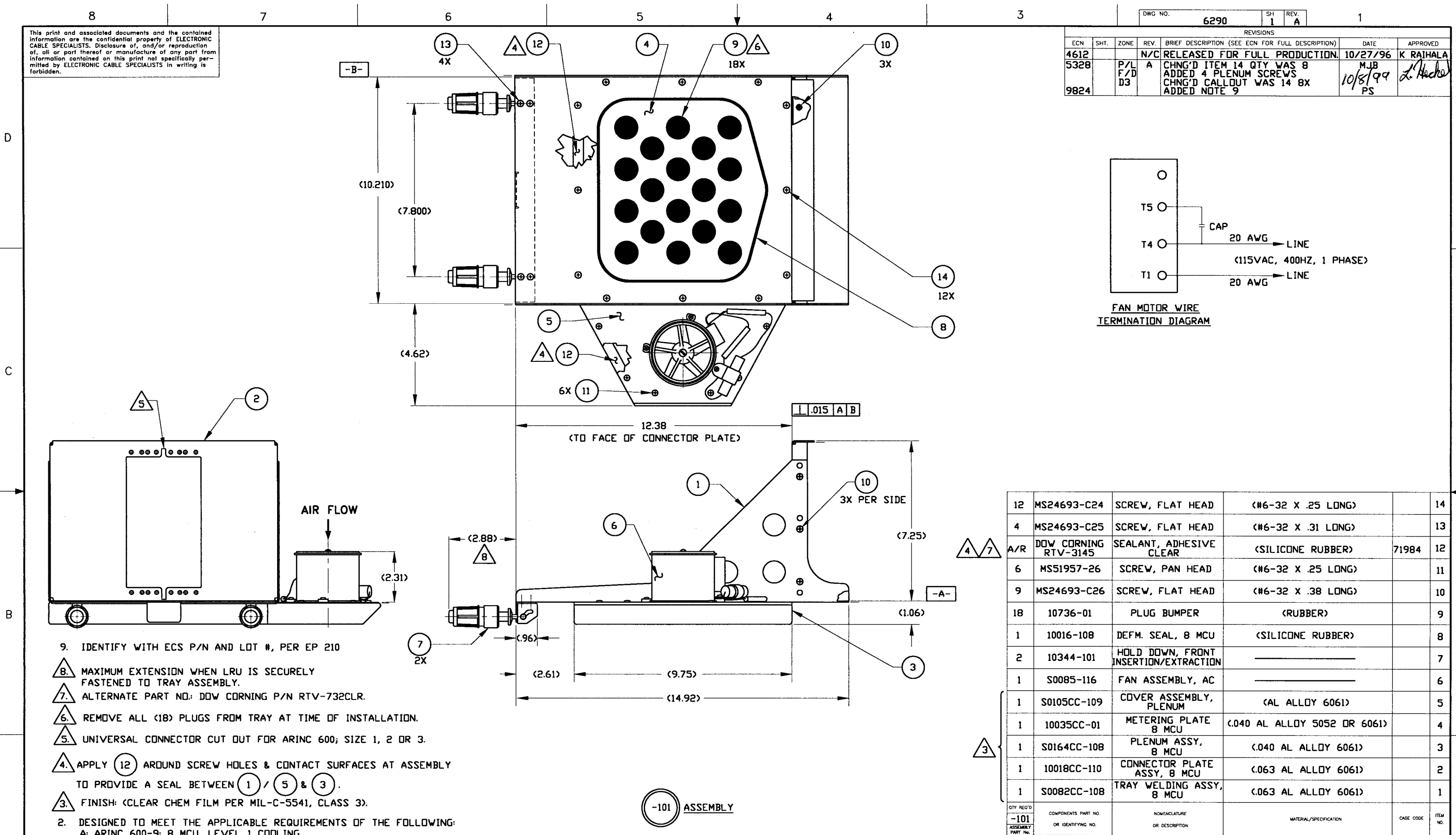
A

D

C

B

A



QTY REQ'D	COMPONENTS PART NO. OR IDENTIFYING NO.	NOMENCLATURE OR DESCRIPTION	MATERIAL/SPECIFICATION	CAGE CODE	ITEM NO.
12	MS24693-C24	SCREW, FLAT HEAD	<#6-32 X .25 LONG>		14
4	MS24693-C25	SCREW, FLAT HEAD	<#6-32 X .31 LONG>		13
A/R	DOW CORNING RTV-3145	SEALANT, ADHESIVE CLEAR	<SILICONE RUBBER>	71984	12
6	MSS1957-26	SCREW, PAN HEAD	<#6-32 X .25 LONG>		11
9	MS24693-C26	SCREW, FLAT HEAD	<#6-32 X .38 LONG>		10
18	10736-01	PLUG BUMPER	<RUBBER>		9
1	10016-108	DEFM. SEAL, 8 MCU	<SILICONE RUBBER>		8
2	10344-101	HOLD DOWN, FRONT INSERTION/EXTRACTION			7
1	S0085-116	FAN ASSEMBLY, AC			6
1	S0105CC-109	COVER ASSEMBLY, PLENUM	<AL ALLOY 6061>		5
1	10035CC-01	METERING PLATE 8 MCU	<.040 AL ALLOY 5052 DR 6061>		4
1	S0164CC-108	PLENUM ASSY, 8 MCU	<.040 AL ALLOY 6061>		3
1	10018CC-110	CONNECTOR PLATE ASSY, 8 MCU	<.063 AL ALLOY 6061>		2
1	S0082CC-108	TRAY WELDING ASSY, 8 MCU	<.063 AL ALLOY 6061>		1

- 9. IDENTIFY WITH ECS P/N AND LOT #, PER EP 210
- △ 8. MAXIMUM EXTENSION WHEN LRU IS SECURELY FASTENED TO TRAY ASSEMBLY.
- △ 7. ALTERNATE PART NO: DOW CORNING P/N RTV-732CLR.
- △ 6. REMOVE ALL (18) PLUGS FROM TRAY AT TIME OF INSTALLATION.
- △ 5. UNIVERSAL CONNECTOR CUT OUT FOR ARINC 600; SIZE 1, 2 OR 3.
- △ 4. APPLY (12) AROUND SCREW HOLES & CONTACT SURFACES AT ASSEMBLY TO PROVIDE A SEAL BETWEEN (1) / (5) & (3).
- △ 3. FINISH: (CLEAR CHEM FILM PER MIL-C-5541, CLASS 3).
- 2. DESIGNED TO MEET THE APPLICABLE REQUIREMENTS OF THE FOLLOWING:
 - A: ARINC 600-9: 8 MCU, LEVEL 1 COOLING
 - EXCEPTIONS AND LIMITATIONS TO ARINC 600-9:
 - 1. MAXIMUM STEADY-STATE HEAT DISSIPATION: 250-360W
 - B: ENVIRONMENTAL CONDITIONS RTCA/DO-160C ENV. CAT. D2-BABXXXXXXXXXXXXXXXXXX.
 - EXCEPTIONS AND LIMITATIONS TO RTCA/DO-160C
 - 1. MAX. OPERATING ALTITUDE: 51,000 Ft.
 - 2. MAX COOLANT AIR BULK INLET TEMP 51,000 Ft: 15°C
 - 3. NOT RECOMMENDED FOR INSTALLATION IN PRESSURIZED AREAS.
 - 1. DIMENSIONS AND TOLERANCES PER ANSI Y14.5M-1982.

-101 ASSEMBLY

THIRD ANGLE PROJECTION

CAD GENERATED DOCUMENT
ANY CHANGES TO THIS DOCUMENT MUST BE SUBMITTED TO THE DESIGN/DRAFTING DEPARTMENT FOR PROPER UPDATE

PART/ASSY PART NO.	QTY REQ'D PER ASSY	FINAL	NEXT/FINAL DWG	PROJECT NO.	PRODUCTION	QUALITY ASSURANCE	ADDITIONAL APPROVALS	DATE
-101	1	1	FINAL	95-1269				

UNLESS OTHERWISE SPECIFIED DIMENSIONS ARE IN INCHES TOLERANCES ARE:	CONTRACT NO.
FRACTIONS ± DECIMALS XX ± 0.3 XXX ± 0.10 DO NOT SCALE DRAWING	9/19/96
TREATMENT	DRAWN BY K. SOMMERS
FINISH	CHECKED BY K. RAIHALA
SIMILAR TO 6213	DESIGNED BY K. RAIHALA
ACT. WT	PROJECT ENGR K. RAIHALA
CALC WT	MFG ENGR
	DATE 11/1/96

ELECTRONIC CABLE SPECIALISTS
FRANKLIN, WI 53132
PHONE: (414) 421-5300

TITLE TRAY ASSEMBLY, 8 MCU S/S WITH RIGHT SIDE HIGH ALTITUDE FAN

SIZE D 66197 C/A LEVEL 1 DWG NO. 6290
SCALE 1/2 EFFECTIVITY SHEET 1 OF 1

NOTES: UNLESS OTHERWISE SPECIFIED

8

7

6

5

4

3

2

1