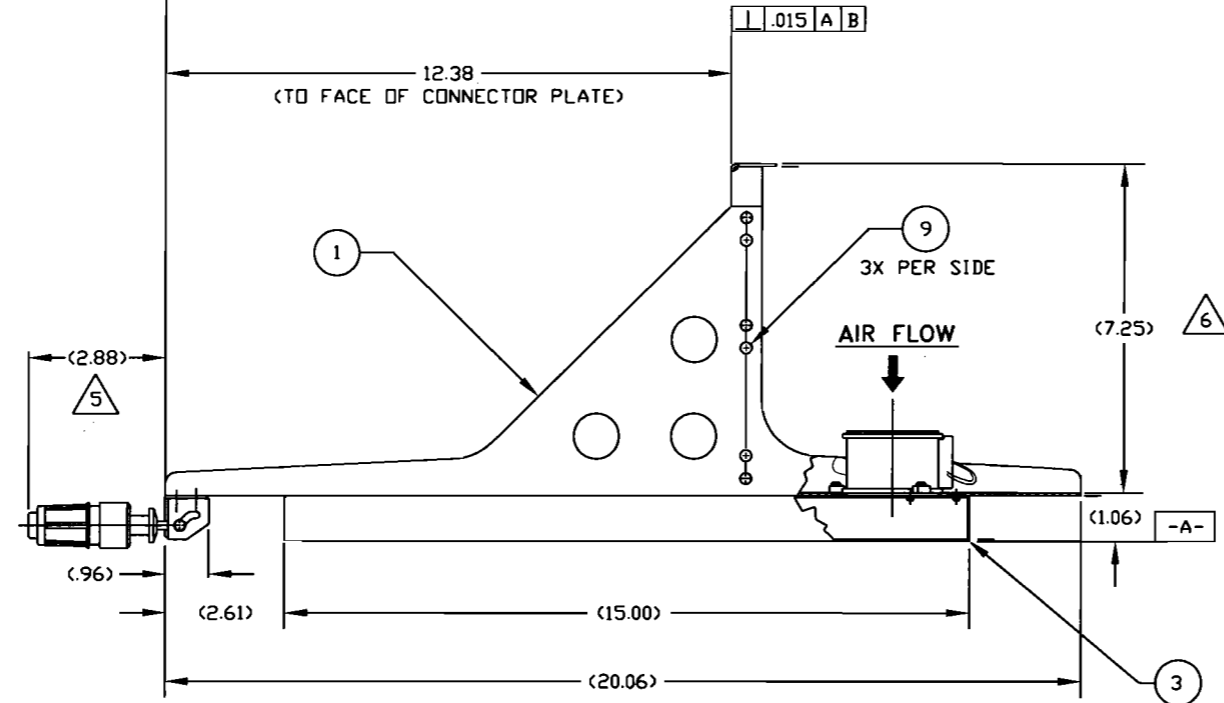
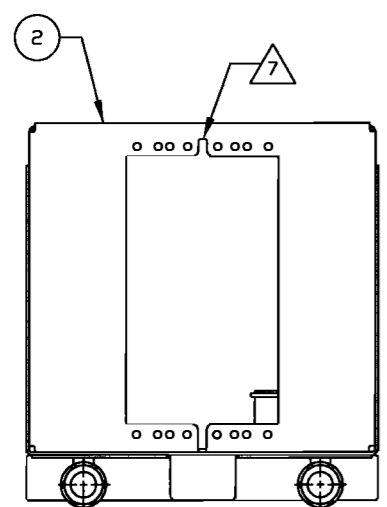
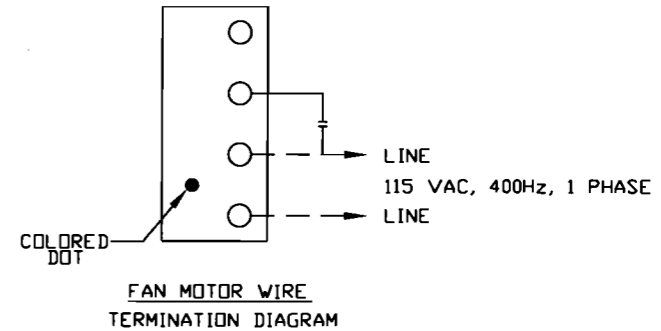
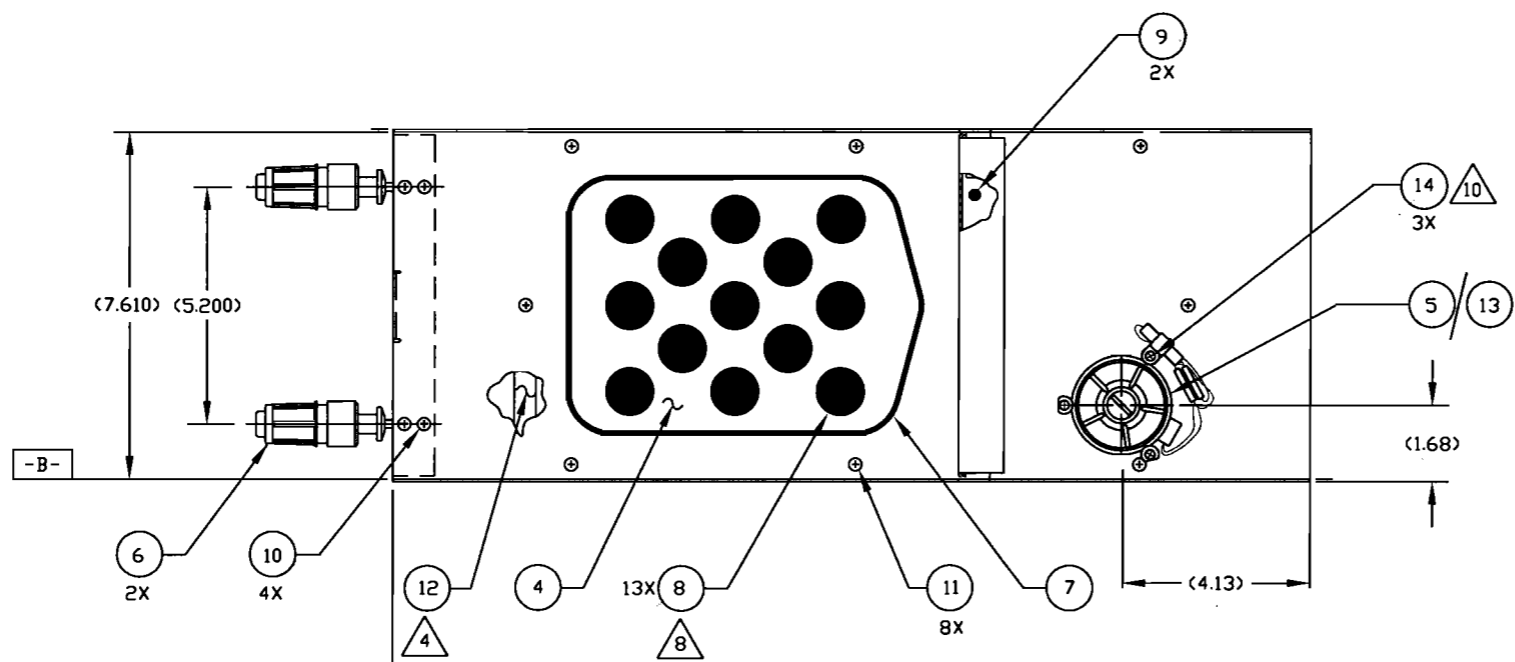


This print and associated documents and the contained information are the confidential property of ELECTRONIC CABLE SPECIALISTS. Disclosure of, and/or reproduction of, all or part thereof or manufacture of any part from information contained on this print not specifically permitted by ELECTRONIC CABLE SPECIALISTS in writing is forbidden.

ECN	SHT.	ZONE	REV.	BRIEF DESCRIPTION (SEE ECN FOR FULL DESCRIPTION)	DATE	APPROVED
3453			N/C	RELEASED	11/20/95	K RAIHALA
4575			A	ITEM 3 P/N WAS S0089-101. UPDATED DWG: FAN & BAFFLE.	LJH 9/5/96	T ANTCZAK
9824		A8	B	ADDED NOTE 9	JTS 4/19/00	L. HECKEL
16269		P/L P/L C2	C	ADDED -102 ASSEMBLY ADDED ITEM 13 FAN WIRES WERE SOLID	BA 3/30/05	EAA
39898		P/L NTS F/D	D	ADDED ITEM 14. ADDED NOTE 10. UPDATED FAN GEOMETRY	LJH 3/16/10	<i>CBLL</i>



QTY REQ'D	QTY REQ'D	COMPONENTS PART NO.	NOMENCLATURE OR IDENTIFYING NO.	MATERIAL/SPECIFICATION	CAGE CODE	STD. NO.
3	3	FE-440-EF	PRESS NUT, SELF-LOCKING	(#4-40, CRES)		14
1	-	S0085-103	FAN ASSEMBLY, AC			13
A/R	A/R	DOW CORNING RTV 3145	ADHESIVE SEALANT CLEAR	SILICONE RUBBER	71984	12
8	8	MS24693-C24	SCREW, FLAT HEAD	#6-32 X .25 LONG, CRES		11
4	4	MS24693-C25	SCREW, FLAT HEAD	#6-32 X .31 LONG, CRES		10
8	8	MS24693-C26	SCREW, FLAT HEAD	#6-32 X .38 LONG, CRES		9
13	13	10736-01	PLUG BUMPER	RUBBER		8
1	1	10016-106	DEFORMATION SEAL ASSY, 6 MCU	SILICONE RUBBER		7
2	2	10344-101	HOLD DOWN, FRONT INSERTION/EXTRACTION			6
-	1	S0085-107	FAN ASSY, AC			5
1	1	10024CC-01	METERING PLATE, 6 MCU	ALUM ALLOY		4
1	1	S0089-201	PLENUM ASSY W/ BAFFLE, 6 MCU	ALUM ALLOY		3
1	1	10018CC-108	CONNECTOR PLATE ASSY, 6 MCU	ALUM ALLOY		2
1	1	S0077CC-206	TRAY WELDING ASSY, 6 MCU	ALUM ALLOY		1

- 10. ASSEMBLE PLENUM TO TRAY ONLY AFTER INSTALLING ALL PRESS NUTS ON TRAY.
- 9. IDENTIFY WITH ECS P/N AND LOT #, PER EP210.
- 8. REMOVE ALL METERING PLUGS (18) AT AIRCRAFT INSTALLATION SITE.
- 7. UNIVERSAL CONNECTOR CUTOUT PER ARINC 600, SIZE 1, 2 OR 3.
- 6. ALTERNATE PART NO. DOW CORNING P/N RTV-732CLR.
- 5. MAXIMUM EXTENSION WHEN LRU IS SECURELY FASTENED TO TRAY ASSEMBLY.
- 4. APPLY (12) AROUND SCREW HOLES & CONTACT SURFACES AT ASSEMBLY TO PROVIDE A SEAL BETWEEN (1) & (3).
- 3. FINISH: (CLEAR CHEM FILM PER MIL-C-5541, CLASS 3).

- 2. DESIGNED TO MEET THE APPLICABLE REQUIREMENTS OF THE FOLLOWING:
 - A: ARINC 600-9: 6 MCU,
 - B: RTCA/DO-160C ENV. CAT. A1-BABXXXXXXXXXXXXXXXXXX
- 1. DIMENSIONS AND TOLERANCES PER ANSI Y14.5M-1982.

(-102) / (-101) ASSEMBLY

THIRD ANGLE PROJECTION

 CAD GENERATED DOCUMENT
 ANY CHANGES TO THIS DOCUMENT MUST BE SUBMITTED TO THE DESIGN/DRAFTING DEPARTMENT FOR PROPER UPDATE

COMP/ISSY PART NO.	QTY REQ'D	DRAWING NO.	PROJECT NO.	APPLICATION	ADDITIONAL APPROVALS	DATE
-102	1	120-87144	011144			
-101	1	FINAL	95-0000			

DESIGNED BY	DATE	CHECKED BY	DATE	ENGINEER	DATE
S KANTORSKI	10/3/95	K RAIHALA	11/20/95	K RAIHALA	11/20/95
		K RAIHALA	11/20/95	T ANTCZAK	11/20/95

ELECTRONIC CABLE SPECIALISTS
 FRANKLIN, WI 53132
 PHONE: (414) 421-5300

TITLE: TRAY ASSY, 6 MCU S/L, w/RIGHT REAR FAN

SIZE: D 66197 C/A
 SCALE: 1/2 EFFECTIVITY: SHEET 1 OF 1

NOTES: UNLESS OTHERWISE SPECIFIED