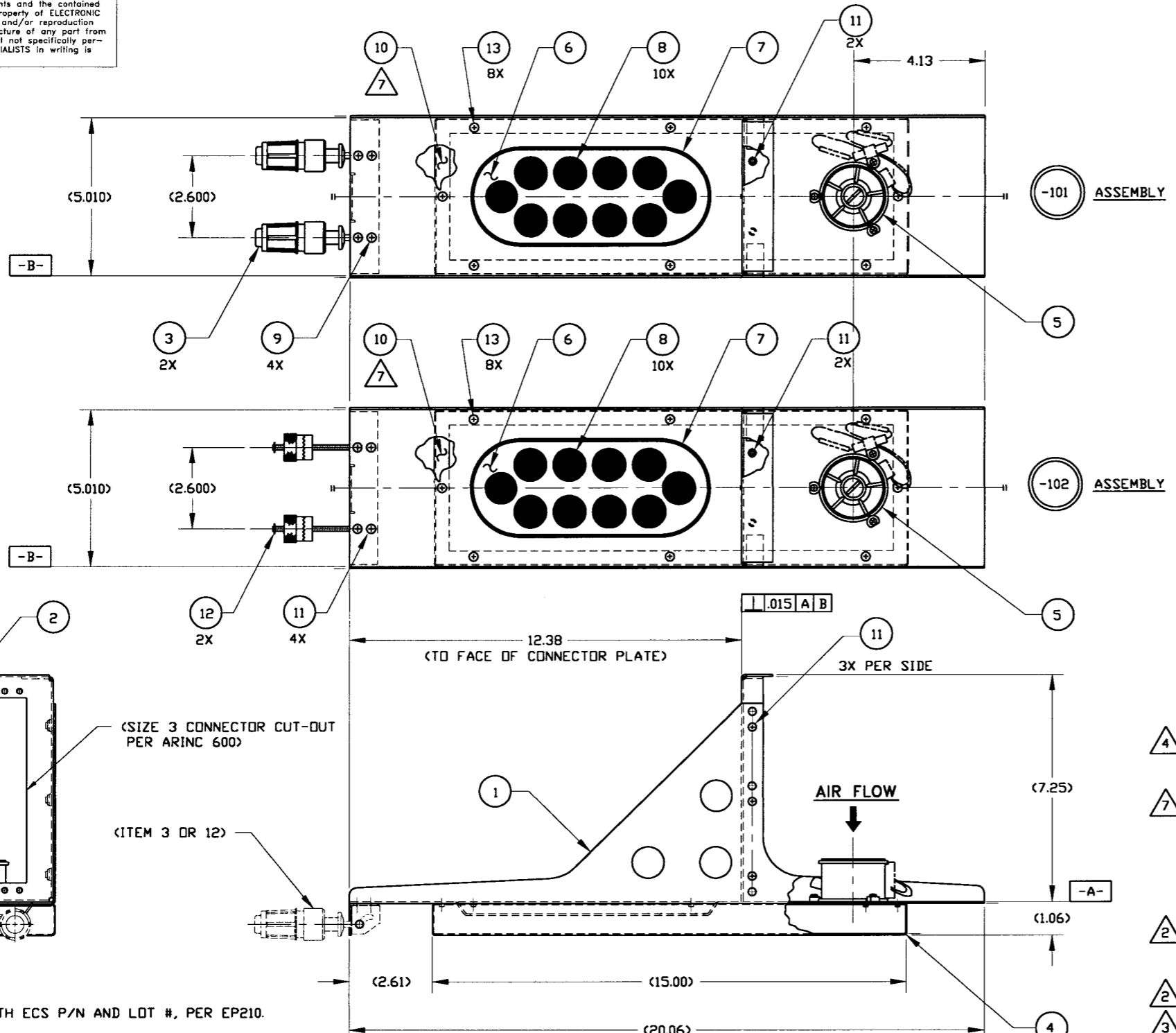


This print and associated documents and the contained information are the confidential property of ELECTRONIC CABLE SPECIALISTS. Disclosure of, and/or reproduction of, all or part thereof or manufacture of any part from information contained on this print not specifically permitted by ELECTRONIC CABLE SPECIALISTS in writing is forbidden.



REVISIONS		DATE	APPROVED
3595	P/L P/L D6 C6 C6 D4 B4 P/L	10/20/99	MJB J SHAW
10125	A		
9824	AB	4/28/00	JTS L. Heckel

QTY REQ'D	QTY REQ'D	COMPONENTS PART NO. OR IDENTIFYING NO.	NOMENCLATURE OR DESCRIPTION	MATERIAL/SPECIFICATION	CAGE CODE	ITEM NO.
8	8	MS24693-C24	SCREW, FLAT HEAD	(#6-32 X .25 LONG)		13
2	-	S0076-105	HOLD DOWN ASSY, FRONT THUMBSCREW			12
12	8	MS24693-C26	SCREW, FLAT HEAD	(.138-32 X .38 LONG)		11
A/R	A/R	DOW CORNING RTV3145, CLR	ADHESIVE SEALANT	(SILICONE RUBBER)	71984	10
-	4	MS24693-C25	SCREW, FLAT HEAD	(.138-32 X .31 LONG)		9
10	10	10736-01	PLUG BUMPER	(RUBBER)		8
1	1	10016-104	DEFORMATION SEAL, ASSY 4 MCU	(SILICONE RUBBER)		7
1	1	10025CC-01	METERING PLATE, 4 MCU	(.040 AL ALLOY 5052 OR 6061)		6
1	1	S0085-103	FAN ASSY, AC	(ROTRON P/N 026949)		5
1	1	S0067CC-104	PLENUM ASSY, 4 MCU	(.040 AL ALLOY 6061)		4
-	2	10344-101	HOLD DOWN ASSY, FRONT INSERTION/EXTRACTION			3
1	1	10018CC-106	CONNECTOR PLATE ASSY 4 MCU	(.063 AL ALLOY 6061)		2
1	1	S0077CC-204	TRAY ASSY, 4 MCU W/REAR FAN	(.063 AL ALLOY 6061)		1

- 8. IDENTIFY WITH ECS P/N AND LOT #, PER EP210.
- 7. APPLY (10) AROUND SCREW HOLES & CONTACT SURFACES AT ASSEMBLY TO PROVIDE A SEAL BETWEEN (1) AND (4)
- 6. MEETS OR EXCEEDS THE REQUIREMENTS OF RTCA/DO-160C AND FAR 25-561
- 5. MEETS OR EXCEEDS ARINC 600 SPECIFICATIONS.
- 4. ALTERNATE PART No: ECS P/N: S0076-101
- 3. ALTERNATE PART No: RAM CA12145-102
- 2. FINISH: (CLEAR CHEM FILM PER MIL-C-5541, CLASS 3)

1. DIMENSIONS AND TOLERANCES PER ANSI Y14.5M-1982.  
 NOTES: UNLESS OTHERWISE SPECIFIED

THIRD ANGLE PROJECTION  
 CAD GENERATED DOCUMENT  
 ANY CHANGES TO THIS DOCUMENT MUST BE SUBMITTED TO THE DESIGN/DRAFTING DEPARTMENT FOR PROPER UPDATE

WEIGHTS	STRESS	PRODUCTION	QUALITY ASSURANCE
COMP/ASSY PART NO.	QTY REQ'D	NEXT ASSY DWG	PROJECT NO.
-101 & -102	-	FINAL	94-0378
APPLICATION	ADDITIONAL APPROVALS	DATE	

UNLESS OTHERWISE SPECIFIED DIMENSIONS ARE IN INCHES. TOLERANCES ARE: FRACTIONS ± .005 DECIMALS .XX ± 0.03 .XXX ± 0.10 .XXX ± 0.10 DO NOT SCALE DRAWING	CONTRACT NO.	ELECTRONIC CABLE SPECIALISTS FRANKLIN, WI 53132 PHONE: (414) 421-5300
TREATMENT	DATE	TITLE
FINISH	5/19/94	TRAY ASSY, 4 MCU S/L W/REAR FAN
SIMILAR TO	6/6/94	SCALE 1/2
ACT. WT	6/7/94	EFFECTIVITY
2.5 LBS.	6/7/94	
MANUFACTURING	DATE	DWG NO.
W SEIBERT	6/7/94	D 66197 C/A 6137
ENGINEERING	DATE	SHEET 1 OF 1