

This print and associated documents and the contained information are the confidential property of ELECTRONIC CABLE SPECIALISTS. Disclosure of, and/or reproduction of, all or part thereof or manufacture of any part from information contained on this print not specifically permitted by ELECTRONIC CABLE SPECIALISTS in writing is forbidden.

**** EXPORT CONTROLLED DOCUMENT - EAR ****
The information in this document is subject to the export controls in accordance with the export administration regulations. Diversion contrary to U.S. Law is prohibited.

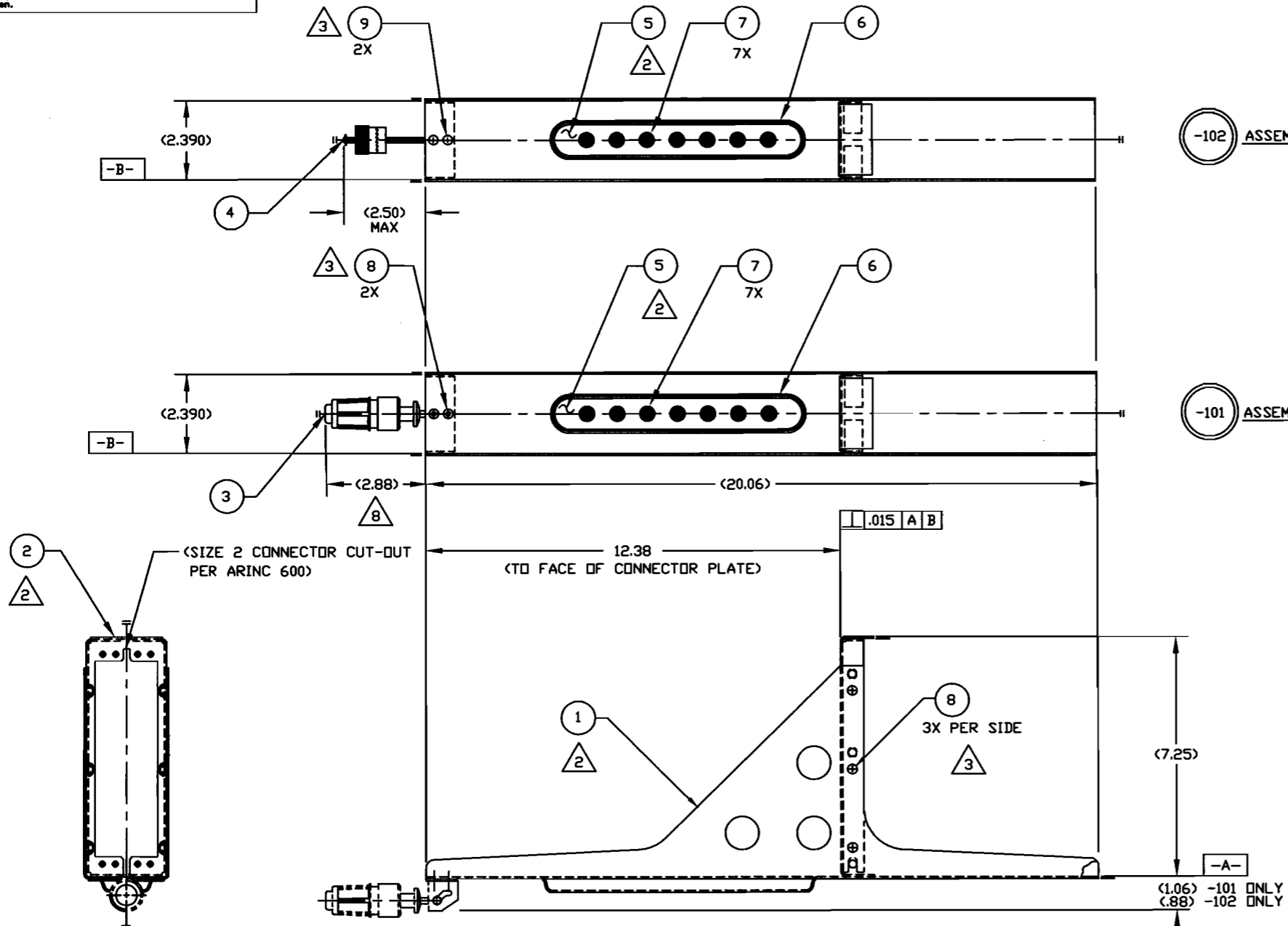
REVISIONS						
ECN	SHT	ZONE	REV.	DESCRIPTION	DATE	APPROVED
			A	ON P/L: ITEM 8 P/N WAS MS24693-C26 ON F/D: ADDED NOTE 3	DS 10/26/92	C ASSEF B KOJIS V SIEBERT
			B	SEE ECN 167 & 128.	LJH 8/4/93	C ASSEF V SIEBERT
			C	SEE ECN 820.	LJH 2/24/94	C ASSEF V SIEBERT
			D	SEE ECN 2950.	JZ 5/11/95	T ANTZAK
17684	B8 B3	NTS P/L	E	ADDED NOTE 9.	JTS 5/30/03	B MATHUR
41987	1 1 1 2	P/L P/L C/D7 NTS C6	F	ADDED ITEM 9. ITEM 8 WAS QTY 8 FOR -102 (2.390) WAS (2.385) UPDATED NOTE 2. (2.390) WAS (2.385)	CH 8/19/11	<i>cbell</i>

D

C

B

A



-102 ASSEMBLY

-101 ASSEMBLY

QTY REQ'D	QTY REQ'D	QTY REQ'D	COMPONENTS PART NO. OR IDENTIFYING NO.	NONCLOSURE OR DESCRIPTION	MATERIAL/SPECIFICATION	QTY CODE	ITEM NO.
2			MS24693-C26	SCREW, FLAT HEAD	<#6-32 X .38 LONG		9
6	6	8	MS24693-C25	SCREW, FLAT HEAD	<.138-32 X .31 LONG		8
7	7	7	10736-07	PLUG BUMPER	<(RUBBER)		7
1	1	1	10016-102	DEFM. SEAL, 2 MCU	<(SILICONE RUBBER)		6
1	1	1	10034CC-01	METERING PLATE 2 MCU	<.040 AL ALLOY 5052 OR 6061		5
1	1	1	S0076-105	HOLD DOWN, FRONT THUMBSCREW			4
1	1	1	10344-101	HOLD DOWN, FRONT INSERTION/EXTRACTION			3
1	1	1	10018CC-103	CONNECTOR PLATE ASSY, 2 MCU	<.063 AL ALLOY 6061		2
1	1	1	S0079CC-122	TRAY WELDING ASSY, 2 MCU	<.063 AL ALLOY 6061		1
PART LIST							

- 9. ALTERNATE P/N: NSA939511-03
- 8. MAXIMUM EXTENSION WHEN LRU IS SECURELY FASTENED TO TRAY ASSEMBLY.
- 7. ALTERNATE PART NO: ECS P/N S0076-101.
- 6. -DELETED-
- 5. MEETS OR EXCEEDS ARINC 600 SPECIFICATIONS.
- 4. ALTERNATE PART NO: RAM P/N CA12145-102.
- 3. APPLY LOCTITE 271 TO SCREW THREADS PRIOR TO INSTALLATION.
- 2. FINISH: CLEAR CHEM FILM PER MIL-DTL-5541, TYPE II, CLASS 3).
1. DIMENSIONS AND TOLERANCES PER ANSI Y14.5M-1982.

NOTES: UNLESS OTHERWISE SPECIFIED

THIRD ANGLE PROJECTION

CAD GENERATED DOCUMENT

ANY CHANGES TO THIS DOCUMENT MUST BE SUBMITTED TO THE DESIGN/DRAFTING DEPARTMENT FOR PROPER UPDATE

-101 THRU -103		1	FINAL	
COMP/REV	REV	DATE	PROJECT NO.	QUALITY ASSURANCE

UNLESS OTHERWISE SPECIFIED TOLERANCES ARE:	CONTRACT NO.
FRACTIONS .001 .002 .005 .010	DRAWN BY D SWITALSKI 10/21/92
DECIMALS .001 .002 .005 .010	CHECKED BY C ASSEF 10/22/92
ANGULAR & T	DESIGNED BY C ASSEF 10/22/92
DO NOT SCALE DRAWING	PROJECT ENG B KOJIS 10/22/92
	DATE 10/22/92
	ENGR W SIEBERT 10/22/92

ELECTRONIC CABLE SPECIALISTS
FRANKLIN, WI 53132
PHONE: (414) 421-5300

TRAY ASSY, 2 MCU
SHORT/LONG
WITH DEFORMATION

SIZE D 66197 C/A 6051
SCALE 1/2 SHEET 1 OF 2

8

7

6

5

4

3

DWG NO.	6051	SH	2	REV.	F	1
REVISIONS						
ZONE	REV.	DESCRIPTION	DATE	APPROVED		
F		SEE SHEET 1				

This print and associated documents and the contained information are the confidential property of ELECTRONIC CABLE SPECIALISTS. Disclosure of, and/or reproduction of, all or part thereof or manufacture of any part from information contained on this print not specifically permitted by ELECTRONIC CABLE SPECIALISTS in writing is forbidden.

**** EAR CONTROLLED ****

D

D

C

C

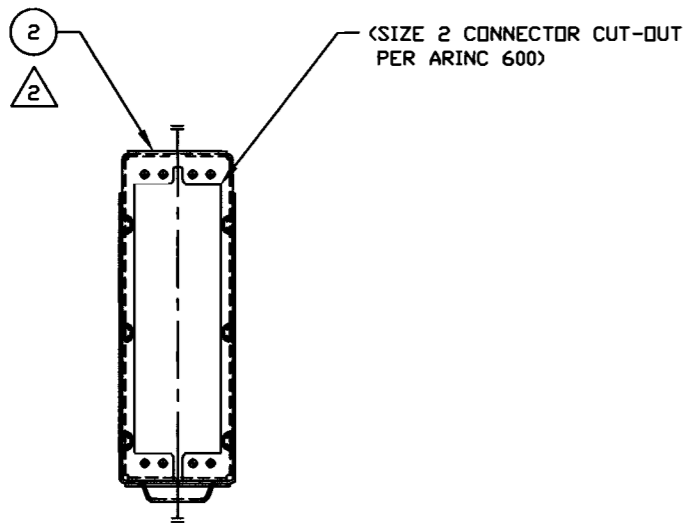
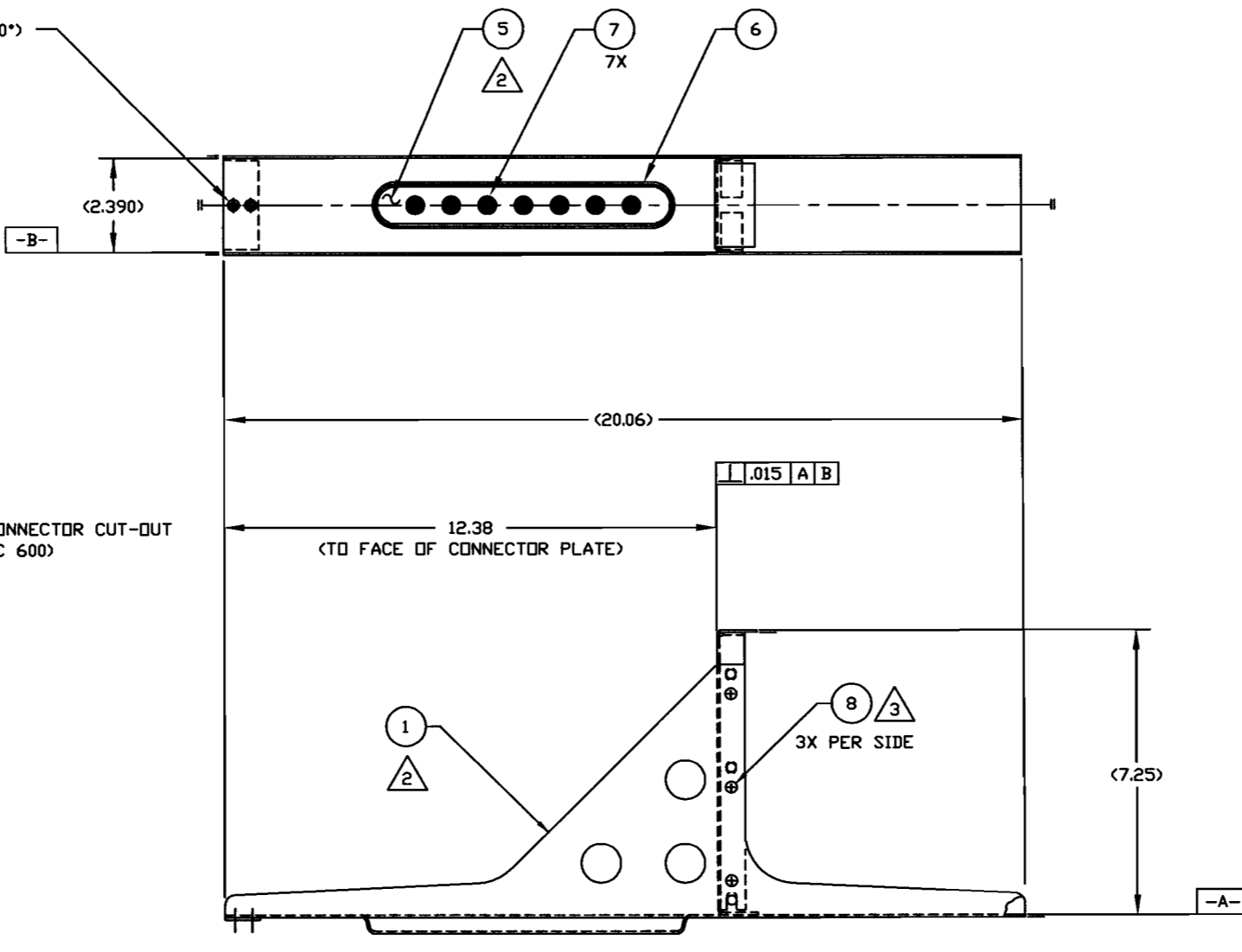
B

B

A

A

2X (Ø.167 √ Ø.285 X 100")

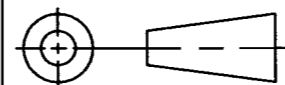


(SIZE 2 CONNECTOR CUT-OUT PER ARINC 600)

(-103) ASSEMBLY

NOTES: SEE SHEET 1

THIRD ANGLE PROJECTION



CAD GENERATED DOCUMENT

ANY CHANGES TO THIS DOCUMENT MUST BE SUBMITTED TO THE DESIGN/DRAFTING DEPARTMENT FOR PROPER UPDATE

ELECTRONIC CABLE SPECIALISTS
FRANKLIN, WI 53132
PHONE: (414) 421-5300

SIZE	DATE CODE	LEVEL	DWG NO.
D	66197	C/A	6051
SCALE	1/2		SHEET
			2 OF 2

8

7

6

5

4

3

2

1