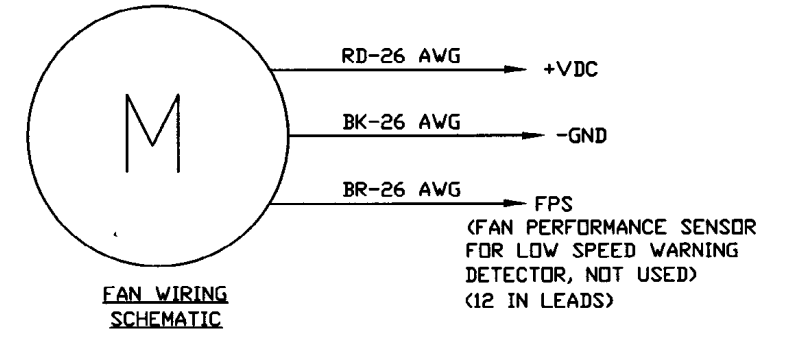
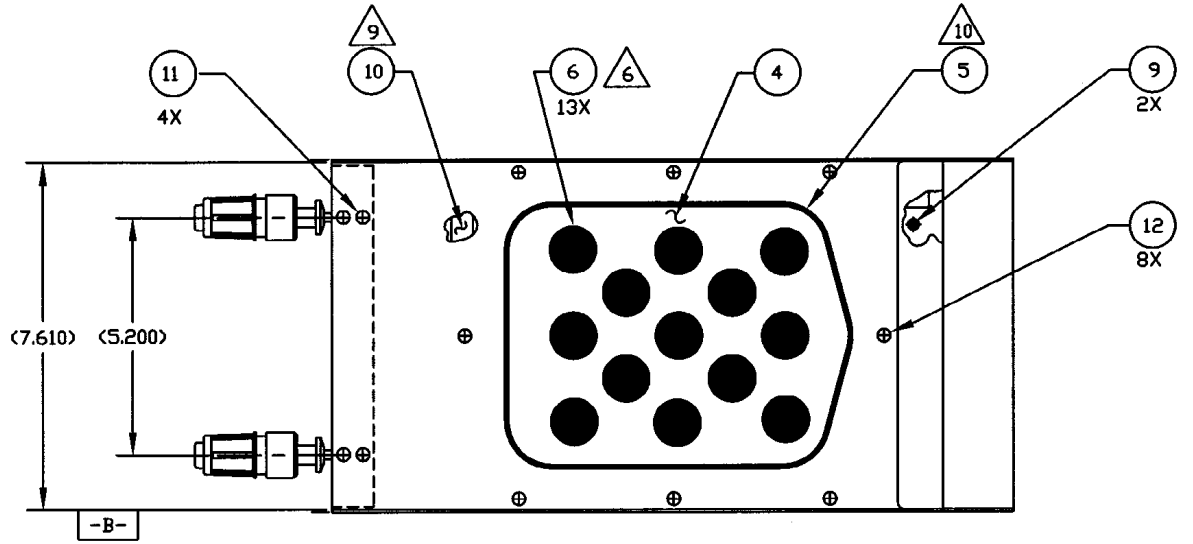


This print and associated documents and the contained information are the confidential property of ELECTRONIC CABLE SPECIALISTS. Disclosure of, and/or reproduction of, all or part thereof or manufacture of any part from information contained on this print not specifically permitted by ELECTRONIC CABLE SPECIALISTS in writing is forbidden.

EON	SHT	ZONE	REV.	REVISIONS		
				DESCRIPTION	DATE	APPROVED
18143			N/C	RELEASED FOR CUSTOMER APPROVAL	BJM 8/22/03	P JOBE
20111	P/L	NTS	A	CHANGED DESCRIPTION OF ITEM 8. REVISED NOTE 2A.	BJM 6/17/04	C BELL
22635	P/L	A5 A4	B	CHGD ITEM 7 WAS 200-93114-101. ADDED DIM 5.86 ADDED DIM 1.40	LJH 4/7/05	CBell

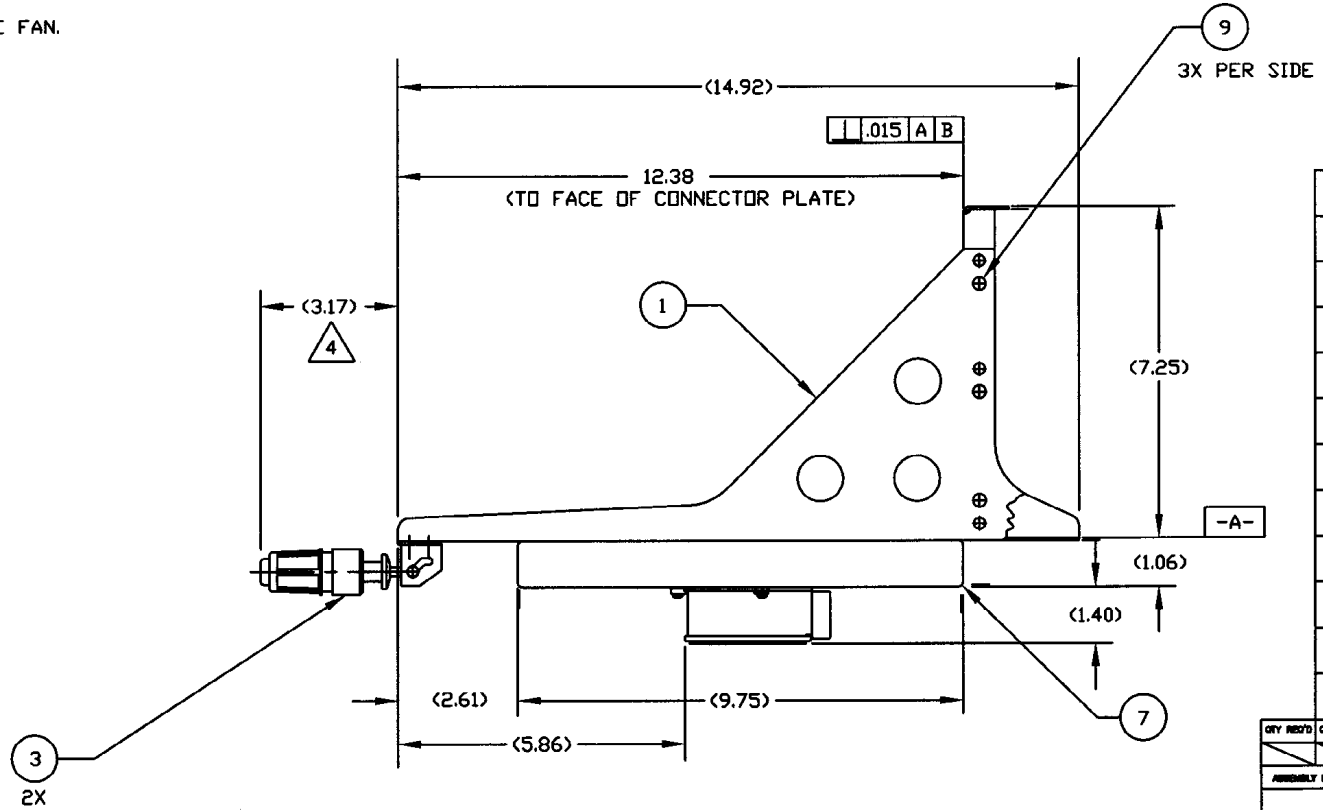
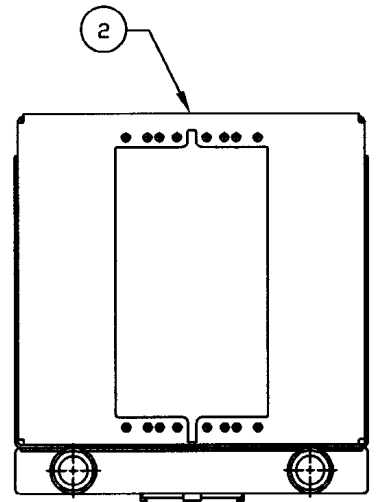
**NOTES: UNLESS OTHERWISE SPECIFIED**  
**GENERAL NOTES:**

- DIMENSIONS AND TOLERANCES PER ASME Y14.5M-1982.
- DESIGNED TO MEET THE APPLICABLE REQUIREMENTS OF THE FOLLOWING:
  - A. ARINC 600-13: 6 MCU
  - B. RTCA/DO-160D ENVIRONMENTAL TEST CONDITIONS.
    - TEMPERATURE: CAT F1
    - ALTITUDE: CAT F1
    - TEMPERATURE VARIATION: CAT B
    - HUMIDITY: CAT A
    - OPERATIONAL SHOCK: CAT B
    - CRASH SAFETY: SUSTAINED, TABLE 7-1, FIXED WING TRANSPORT A/C, FIXED ORIENTATION
    - VIBRATION: CAT S, CURVE B2.
- TRAY, PLENUM AND CONNECTOR PLATE FINISH: CLEAR CHEM FILM PER MIL-C-5541, CLASS 3.
- MAXIMUM EXTENSION WHEN LRU IS SECURELY FASTENED TO TRAY ASSEMBLY.
- RECOMMENDED FOR INSTALLATION IN UNPRESSURIZED AREAS.
- REMOVE ALL METERING PLUGS PRIOR TO INSTALLING LRU.
- FAN ELECTRICAL SPECIFICATIONS:  
VOLTAGE: 28 VDC      CURRENT: 1.3 AMPS



**ASSEMBLY NOTES:**

- IDENTIFY WITH ECS P/N AND LOT # PER EP 210
- APPLY SEALANT AROUND SCREW HOLES AND CONTACT SURFACES TO PROVIDE A GOOD SEALING CONDITION.
- APPLY SEALANT AROUND THE EDGES OF DEFORMATION CUTOUT PRIOR TO ASSEMBLING DEFORMATION SEAL TO TRAY.
- FUNCTIONAL TEST: APPLY POWER 28 VDC TO OPERATE FAN.



QTY REQ'D	QTY REQ'D	COMPONENTS PART NO. OR IDENTIFYING NO.	NOMENCLATURE OR DESCRIPTION	MATERIAL/SPECIFICATION	CAGE CODE	REF. NO.
8		MS24693-C24	SCREW, FLAT HEAD	<#6-32 X .25 LONG>		12
4		MS24693-C25	SCREW, FLAT HEAD	<#6-32 X .31 LONG>		11
A/R		DOW CORNING RTV 3145, CLR	ADHESIVE SEALANT CLEAR	<SILICONE RUBBER>		10
8		MS24693-C26	SCREW, FLAT HEAD	<138-32 X .38 LONG>		9
1		S0085-138	FAN ASSY, DC			8
1		S0109CC-506	PLENUM ASSY, 6 MCU	<AL ALLOY>		7
13		10736-01	PLUG BUMPER	<RUBBER>		6
1		10016-106	DEFORMATION SEAL ASSY, 6 MCU	<SILICONE RUBBER>		5
1		10024CC-01	METERING PLATE, 6 MCU	<AL ALLOY>		4
2		10344-101	HOLD DOWN, FRONT INSERTION/EXTRACTION			3
1		10018CC-108	CONNECTOR PLATE ASSY, 6 MCU	<AL ALLOY>		2
1		S0082CC-106	TRAY WELDING ASSY, 6 MCU	<AL ALLOY>		1

THIRD ANGLE PROJECTION  
  
 CAD GENERATED DOCUMENT  
 ANY CHANGES TO THIS DOCUMENT MUST BE SUBMITTED TO THE DESIGN/DRAFTING DEPARTMENT FOR PROPER UPDATE

COMP/REV	QTY	FINAL/REV	PROJECT NO.	QUALITY ASSURANCE	DATE
1		ECS-202176	030958		

DESIGNED	DATE	CHECKED	DATE	DESIGNED	DATE	PROJECT	DATE
B MATHUR	8/21/03	L HECKEL	8/22/03	B MATHUR	6/16/04	B MATHUR	6/16/04

ELECTRONIC CABLE SPECIALISTS  
 FRANKLIN, WI 53152  
 PHONE: (414) 421-5300  
**TRAY ASSY, 6 MCU S/S WITH BOTTOM FAN**  
 SIZE: D 66197 C/A  
 LEVEL: C/A  
 DWG NO.: 200-93112-101  
 SCALE: 1/2  
 SHEET: 1 OF 1