

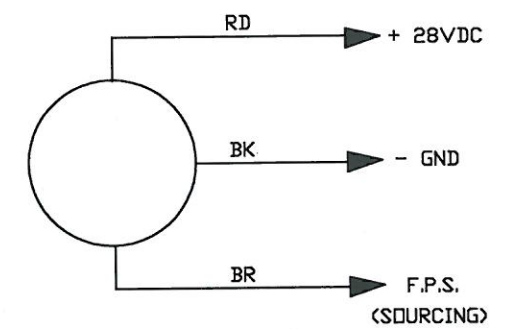
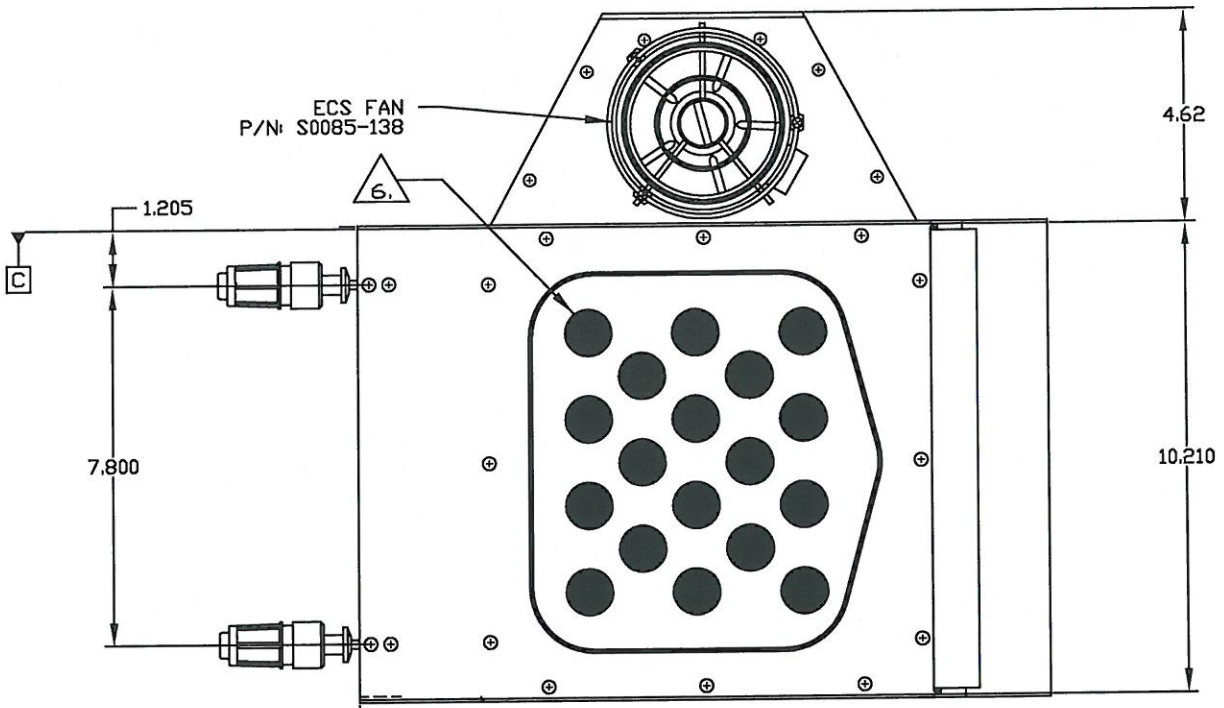
This print and associated documents and the contained information are the confidential property of ELECTRONIC CABLE SPECIALISTS. Disclosure of, and/or reproduction of, all or part thereof or manufacture of any part from information contained on this print not specifically permitted by ELECTRONIC CABLE SPECIALISTS in writing is forbidden.

**** EXPORT CONTROLLED DOCUMENT - EAR ****
The information in this document is subject to the export controls in accordance with the export administration regulations. Diversion contrary to U.S. Law is prohibited.

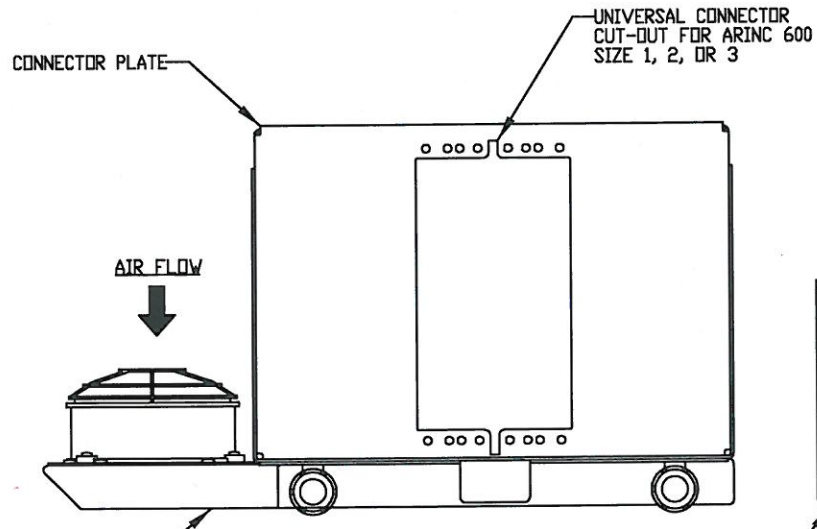
REVISIONS						
ECN	SHT	ZONE	REV.	DESCRIPTION	DATE	APPROVED
25473			N/C	RELEASED	11/28/06	EAA
53826		NTS B1/2 B6/7 A3	A	UPDATED NOTE 3, ADDED NOTE 7 & 8 ADDED ALT HOLD DOWN VIEW UPDATED INSERTION-EXTRACTION CALLOUT ADDED CAL WGT	LJH 11/5/14	YJB

NOTES: UNLESS OTHERWISE SPECIFIED
GENERAL NOTES:

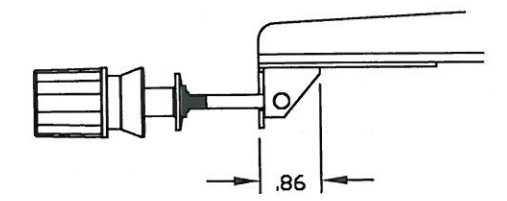
- DIMENSIONS AND TOLERANCES PER ASME Y14.5M-1994.
- DESIGNED TO MEET THE APPLICABLE REQUIREMENTS OF THE FOLLOWING:
 - ARINC 600-13: 8 MCU
 - RTCA/DO-160D ENVIRONMENTAL TEST CONDITIONS:
 - TEMPERATURE: CAT A2
 - ALTITUDE: CAT A2
 - TEMP VARIATION: CAT B
 - HUMIDITY: CAT A
 - OPERATIONAL SHOCK: CAT B
 - CRASH SAFETY: SUSTAINED, TABLE 7-1, ALL FIXED WING TRANSPORT A/C, RANDOM ORIENTATION
 - VIBRATION: CAT S, CURVE B2
- TRAY, PLENUM AND CONNECTOR PLATE FINISH: CLEAR CHEM FILM PER MIL-DTL-5541, TYPE II, CLASS 3.
- FOR PRESSURIZED APPLICATION ONLY. NOT RECOMMENDED FOR INSTALLATION IN UNPRESSURIZED AREAS.
- ELECTRICAL SPECIFICATIONS (FAN):
 - FAN: 28 VDC
 - CURRENT: 1.30 AMPS (NOM)
 - FAN SUPPLIED WITH 12 IN LEADS (26 AWG.)
- REMOVE METERING PLUGS PRIOR TO INSTALLING THE LRU ON AIRCRAFT.
- MAXIMUM EXTENSION WHEN LRU IS FASTENED TO TRAY ASSEMBLY.
- SEE ALTERNATE HOLD DOWN DETAIL VIEW.



FAN WIRING DIAGRAM



INSERTION-EXTRACTION HOLDDOWNS
ECS P/N: 10344-101 (SHOWN)
OR ALTERNATE HOLD DOWN
P/N: 200-33899-101



ALTERNATE HOLD DOWN
P/N: 200-33899-101
SCALE: NONE

ECS PART NO.: 200-91171-102

PRODUCT SPECIFICATION DRAWING

THIRD ANGLE PROJECTION		WEIGHTS		UNLESS OTHERWISE SPECIFIED DIMENSIONS ARE IN INCHES FRACTIONS DECIMALS ANGULAR		CONTRACT NO.		ELECTRONIC CABLE SPECIALISTS	
		STRESS		DO NOT SCALE DRAWING		L HECKEL 5/22/06		FRANKLIN, WI 53132	
CAD GENERATED DOCUMENT		FINAL 030079		TREATMENT		C BELL 11/29/06		PHONE: (414) 421-5300	
ANY CHANGES TO THIS DOCUMENT MUST BE SUBMITTED TO THE DESIGN/DRAFTING DEPARTMENT FOR PROPER UPDATE		PRODUCTION		FINISH		C BELL 5/22/06		TITLE	
QTY REQ'D		QUALITY ASSURANCE		SIMILAR TO		C BELL 11/29/06		TRAY ASSY, 8 MCU S/S	
APPLICATION		ADDITIONAL APPROVALS		ACT. WT LBS		C BELL 11/29/06		W/ LEFT SIDE MTD FAN	
		DATE		3.55		T ANTCHAK 11/30/06		SIZE	
								D 66197 C	
								LEVEL	
								ECS-201702	
								Dwg No.	
								ECS-201702	
								SCALE	
								2/1	
								RELEASE DATE	
								SHEET 1 OF 1	