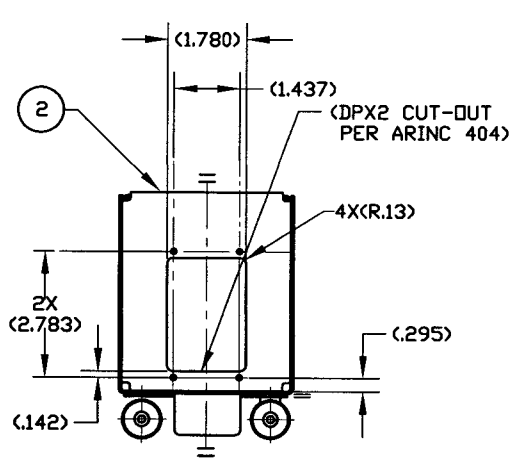
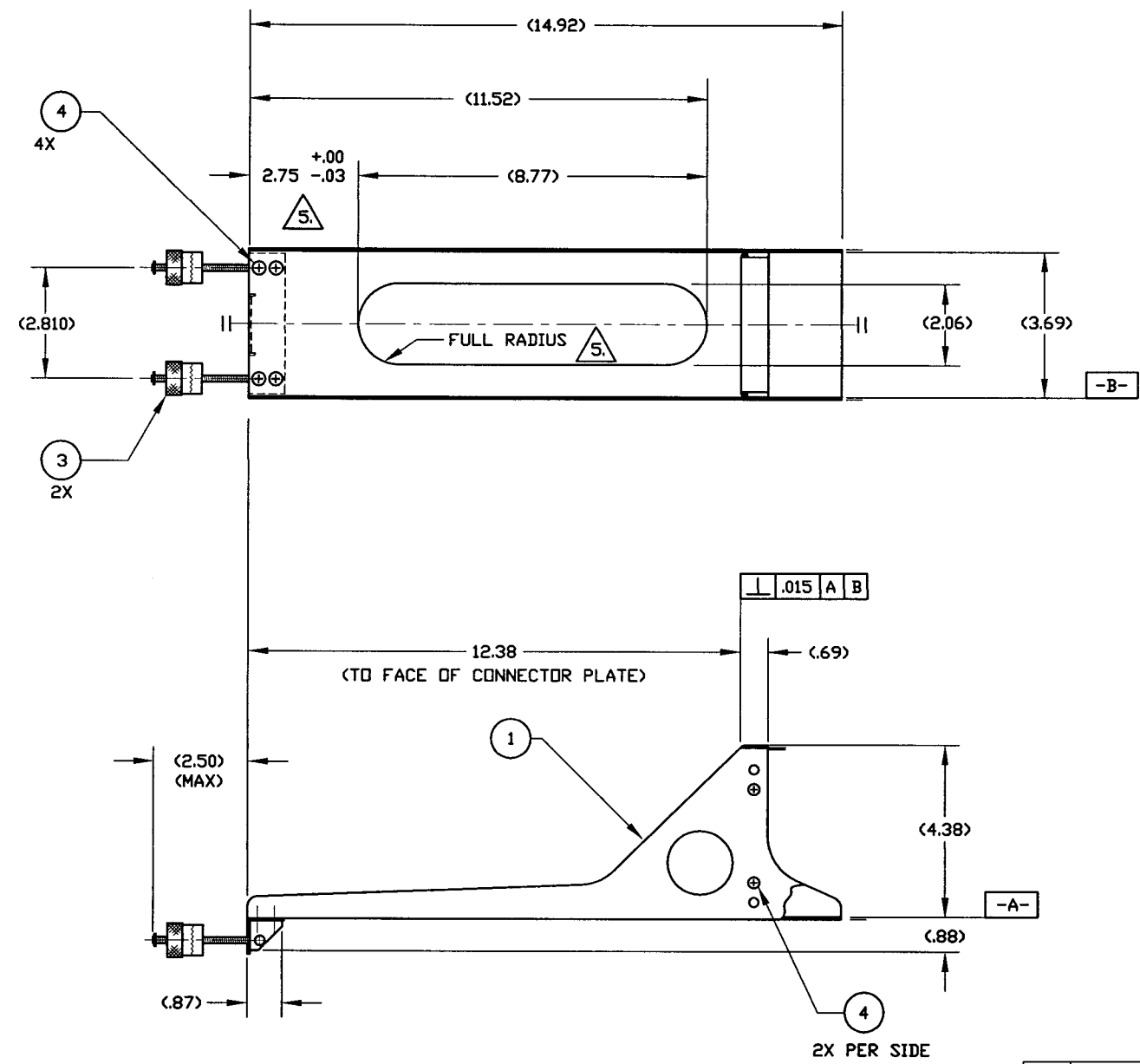


This print and associated documents and the contained information are the confidential property of ELECTRONIC CABLE SPECIALISTS. Disclosure of, and/or reproduction of, all or part thereof or manufacture of any part from information contained on this print not specifically permitted by ELECTRONIC CABLE SPECIALISTS in writing is forbidden.

DWG NO. 200-86686-101				SHEET 1	REV. A	
REVISIONS						
ECN	SHT	ZONE	REV.	DESCRIPTION	DATE	APPROVED
13201			N/C	RELEASED FOR FULL PRODUCTION	2/1/01	B MATHUR
13354		B7	A	ITEM 2 WAS 10469CC-102 .87 DIM WAS .88	MJP 3/7/01	B MATHUR BJM



QTY REQ'D	COMPONENTS PART NO. OR IDENTIFYING NO.	NOMENCLATURE OR DESCRIPTION	MATERIAL/SPECIFICATION	CAGE CODE	ITEM NO.
8	MS24693-C26	SCREW, FLAT HEAD	(#6-32 X .38 LG, STEEL)		4
2	S0076-106	HOLD DOWN ASSY, FRONT THUMBSCREW			3
1	10332CC-102	CONNECTOR PLATE ASSY, 3/8 ATR	(.063 AL ALLOY 6061)		2
1	200-86687CC-101	TRAY WELDING ASSY, 3/8 ATR	(5.0) (6.0)		1

- 6. AFTER MACHINING, TOUCH UP MACHINED AREAS WITH CLEAR, CHEM FILM PER MIL-C-5541, CLASS 3.
- 5. MAKE FROM S0097CC-112 MODIFY AS SHOWN IN THIS DRAWING.
- 4. IDENTIFY WITH ECS P/N AND LOT#, PER EP210.
- 3. FINISH: (CLEAR CHEM FILM PER MIL-C-5541, CLASS 3).

- 2. DESIGNED TO MEET THE APPLICABLE REQUIREMENTS OF THE FOLLOWING.
  - A. ARINC 404A - 3/8 - ATR - SHORT
  - B. RTCA/DD-160C ENV. CAT. [A3F2J-BABXXXXXXXXXXXXXXXXXX.
- 1. DIMENSIONS AND TOLERANCES PER ANSI Y14.5M-1982.

NOTES: UNLESS OTHERWISE SPECIFIED

**THIRD ANGLE PROJECTION**

**CAD GENERATED DOCUMENT**  
 ANY CHANGES TO THIS DOCUMENT MUST BE SUBMITTED TO THE DESIGN/DRAFTING DEPARTMENT FOR PROPER UPDATE

1	FINAL	010116	PRODUCTION
COMP/ASSY PART NO.	QTY REQ'D	FINAL/NEXT DWG	PROJECT NO.

UNLESS OTHERWISE SPECIFIED DIMENSIONS ARE IN INCHES TOLERANCES ARE:	CONTRACT NO.
FRACTIONS DECIMALS ANGULAR ± 1°	DATE
DO NOT SCALE DRAWING	DATE
TREATMENT	DATE
FINISH	DATE
SIMILAR TO	DATE
ACT. WT	DATE

**ELECTRONIC CABLE SPECIALISTS**  
 FRANKLIN, WI 53132  
 PHONE: (414) 421-5300

**TRAY ASSEMBLY, STD, W/DPX2 & OVAL CUT-OUT, 3/8 ATR S/S/M**

DATE: 2/1/01  
 CHECKED: M PESKE  
 DESIGNED: B MATHUR  
 PROJECT: B MATHUR  
 MANUFACTURING: DVH  
 ENGINEERING: B MATHUR

SCALE: 1/2 EFFECTIVITY: SHEET 1 OF 1