

This print and associated documents and the contained information are the confidential property of ELECTRONIC CABLE SPECIALISTS. Disclosure of, and/or reproduction of, all or part thereof or manufacture of any part from information contained on this print not specifically permitted by ELECTRONIC CABLE SPECIALISTS in writing is forbidden.

| REVISION HISTORY | | | | | | |
|------------------|-----|------|-----|--|--------------|-------------|
| ECN | SHT | ZONE | REV | DESCRIPTION | DATE | APPROVED |
| | | | X | DEVELOPMENT | 3/31/00 | S KANTORSKI |
| | | B5 | X1 | ADDED DIM 2.90 | LJH 4-4-00 | S KANTORSKI |
| | | B4 | | ADDED DIM 1.50 | | |
| 11446 | | | N/C | RELEASED FOR DESIGN APPROVAL | 4/12/00 | T ANT CZAK |
| 11543 | 2 | D7 | A | CHNG'D NOTE 6 WAS 732CLR REVISED NOTE 8 CHNG'D P/N OF ITEM 3 WAS 1147CC-01 CHNG'D QTY OF ITEM 7 WAS 6 CHNG'D MATERIAL SPEC OF ITEM 8 WAS .188 LONG CHNG'D P/N OF ITEM 9 WAS RTV 3145. CLR ADDED CLEAR TO MATERIAL SPEC OF ITEM 9 ADDED DETAIL A ADDED SIDE VIEW ADDED SHT 2 ADDED ITEM 10 THRU ITEM 16 MOVED PICTORIAL REPRESENTATION OF TRAY ASSY TO SHT 2 CHNG'D P/N OF ITEM 2 | MJB 4/18/00 | B MATHUR |
| 11596 | 2 | A5 | B | ADDED NOTE 10 CHNG'D P/N OF ITEM 5 WAS 10344-101 ADDED DETAIL B | MJB 4/28/00 | B MATHUR |
| 23712 | 1 | B2 | C | ADDED FLAG NOTE 11. DIM 2.08 WAS 1.97 | LGR 9/12/05 | CBELL |
| 27035 | 1 | | D | ITEM 8 WAS MS20426AD3-4S. ITEM 9 QTY WAS 1. DELETED ITEM 11 ITEM 12 WAS NAS1149DN832J, QTY 2. ITEM 13 WAS MS35206-248. ITEM 14 WAS MS35649-282. ITEM 15 WAS MS21042L08. ITEM 16 WAS MS3538-42. ADDED NOTE 12. | PV 11/16/06 | C BELL |
| 31430 | 1 | B7 | E | UPDATED WIRING SCHEMATIC. | LJH 1/10/08 | EAA |
| 39226 | | A3 | F | ADDED CALC. WT. ADDED NOTE 13. DELETED NOTE 6. | LJH 12/22/09 | C BELL |
| 39346 | 2 | F/D | G | ROTATE FAN PLATE 180°. | LJH 1/7/10 | CBell |

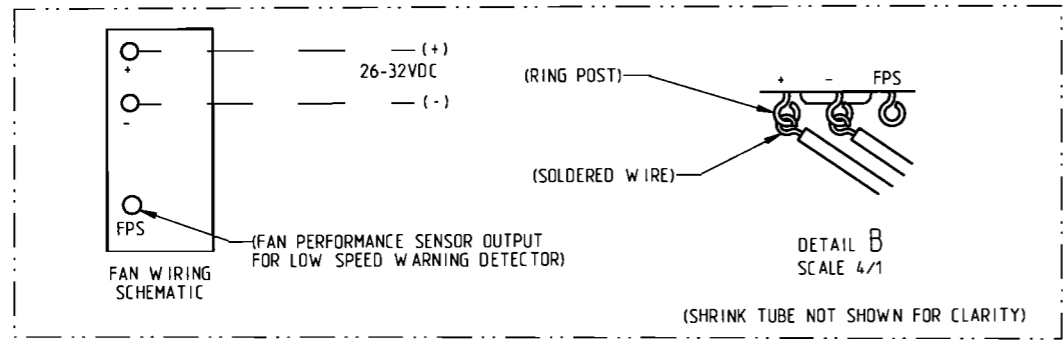
NOTES: UNLESS OTHERWISE SPECIFIED
GENERAL NOTES:

- DIMENSIONS AND TOLERANCES PER ASME Y14.5M-1994.
- DESIGNED TO MEET THE APPLICABLE REQUIREMENTS OF THE FOLLOWING:
A: ARINC 600-9; 4 MCU, SHORT
B: RTCA/DO-160C ENV. CAT. A1-BABXXXXXXXXXXXXXXXXXX

- FINISH: CLEAR CHEM FILM PER MIL-C-5541, CLASS 3.
- MAXIMUM EXTENSION WHEN LRU IS SECURELY FASTENED TO TRAY ASSEMBLY.
- UNIVERSAL CONNECTOR CUTOUT PER ARINC 600, SIZE 1, 2 OR 3.

ASSEMBLY NOTES:

- DELETED-
- MATCH DRILL ϕ .098 \pm .004 \pm .000H DLES INTO TRAY, ITEM 1, USING COUNTERSINK HOLES IN METERING PLATE, ITEM 3 FOR THE PROPER LOCATIDN. INSURE MINIMUM EDGE DISTANCE OF .188.
- APPLY ADHESIVE, ITEM 9, AROUND CONTACT SURFACES TO PROVIDE A SEAL BETWEEN TRAY, ITEM 1, & METERING PLATE, ITEM 3.
- IDENTIFY WITH ECS P/N AND LDT#, PER EP 210.
- FAN MOTOR CURENT:
RUN - 0.25 AMPS
START- 1.40 AMPS
- FOR INSTALLATION PURPOSES ONLY
- THIS TRAY IS ROHS COMPLIANT, EXCEPT FOR FAN ASSEMBLY (ITEM 4).
- HAND TIGHTEN NUT (ITEM 14). DO NOT ENGAGE THE NUT LOCKING MECHANISM.



11. (FOR INSTALLATION PURPOSES ONLY)

| QTY. | COMPONENT PART NO. OR IDENTIFYING NO. | NOMENCLATURE OR DESCRIPTION | MATERIAL/SPECIFICATION | ALTERNATE PART NO. | CAGE CODE | ITEM NO. |
|------|---------------------------------------|---|---|--------------------|-----------|----------|
| 2 | MS35338-137 | HELICAL LOCKWASHER | #8 X .040 THK. CRES PASSIVATED PER QQ-P-35 | - | - | 16 |
| 1 | MS35649-284 | NUT, PLAIN, HEXAGON, MACHINE SCREW UNC-2B | #8-32. CRES STEEL PASSIVATED / QQ-P-35 | - | - | 15 |
| 1 | MS21043-08 | NUT, SELF-LOCKING | #8-32. CRES. SILVER PLATE | - | - | 14 |
| 1 | MS51957-48 | SCREW, PAN HEAD | #8-32 X 0.875 LONG. CRES | - | - | 13 |
| 4 | NAS1149CN832R | WASHER, FLAT | #8 X .032 THK. CRES PASSIVATED / QQ-P-35 | - | - | 12 |
| 1 | MS25036-156 | RING TERMINAL | #8 | - | - | 10 |
| A/R | DOW CORNING P/N: RTV-3145 | ADHESIVE SEALANT | (SILICONE RUBBER, CLEAR) | - | - | 9 |
| 8 | MS20426AD3-4A | RIVET, SOLID FLUSH HEAD | Ø3/32 X .250 LONG. ALUM CA / MIL-A-8625, TYPE 11, CLASS 1 | - | - | 8 |
| 8 | MS24693-C26 | SCREW, FLAT HEAD | #6-32 X .38 LG. CRES | - | - | 7 |
| 4 | MS24693-C25 | SCREW, FLAT HEAD | #6-32 X .31 LG. CRES | - | - | 6 |
| 2 | S0076-105 | HOLD DOWN | | - | - | 5 |
| 1 | S0085-104 | FAN ASSEMBLY | DC FAN | - | - | 4 |
| 1 | 11447-101 | METERING PLATE 4 MCU | (.040 AL ALLOY 5052 OR 6061) | - | - | 3 |
| 1 | 200-85054CC-101 | CONNECTOR PLATE ASSEMBLY, 4 MCU | (.063 AL ALLOY 6061) | - | - | 2 |
| 1 | 200-84966CC-101 | TRAY WELDING ASSEMBLY, 4 MCU S/S | (.063 AL ALLOY 6061) | - | - | 1 |
| 1 | 200-84922-101 | TRAY ASSEMBLY, BOTTOM DC FAN, 4 MCU S/S | | - | - | - |

| | | | | | | | | | |
|---|--|--------------|--|--|--|--------------|--|--|--|
| THIRD ANGLE PROJECTION | | WEIGHTS | | UNLESS OTHERWISE SPECIFIED DIMENSIONS ARE IN INCHES TOLERANCES ARE: | | CONTRACT NO. | | ELECTRONIC CABLE SPECIALISTS | |
| | | STRESS | | FRACTIONS DECIMALS ANGULAR ± .003 ± .003 ± .5 ± .000 ± .000 ± .5 DO NOT SCALE DRAWING | | M BOHMAN | | FRANKLIN, WI 53132 | |
| CAD GENERATED DOCUMENT ANY CHANGES TO THIS DOCUMENT MUST BE SUBMITTED TO THE DESIGN/DRAFTING DEPARTMENT FOR PROPER UPDATE | | FINAL 000654 | | TREATMENT | | L HECKEL | | PHONE: (414) 421-5300 | |
| PART/ASSY DASH NO. | | QTY REQ'D | | FINISH | | L HECKEL | | TITLE | |
| APPLICATION | | PROJECT NO. | | QUALITY ASSURANCE | | B MATHUR | | TRAY ASSEMBLY. | |
| ADDITIONAL APPROVALS | | DATE | | SIMILAR TO | | J. BAYLON | | BOTTOM DC FAN, 4 MCU S/S | |
| | | | | 6362 | | T ANT CZAK | | SCALE NONE EFFECTIVITY: - SHEET 1 OF 2 | |

NAME: LARRY HECKEL OBJECT: 84922-101-1 DATE: 07-Jan-10 14:16:55

8

7

6

5

4

3

DWG NO. 200-84922-101

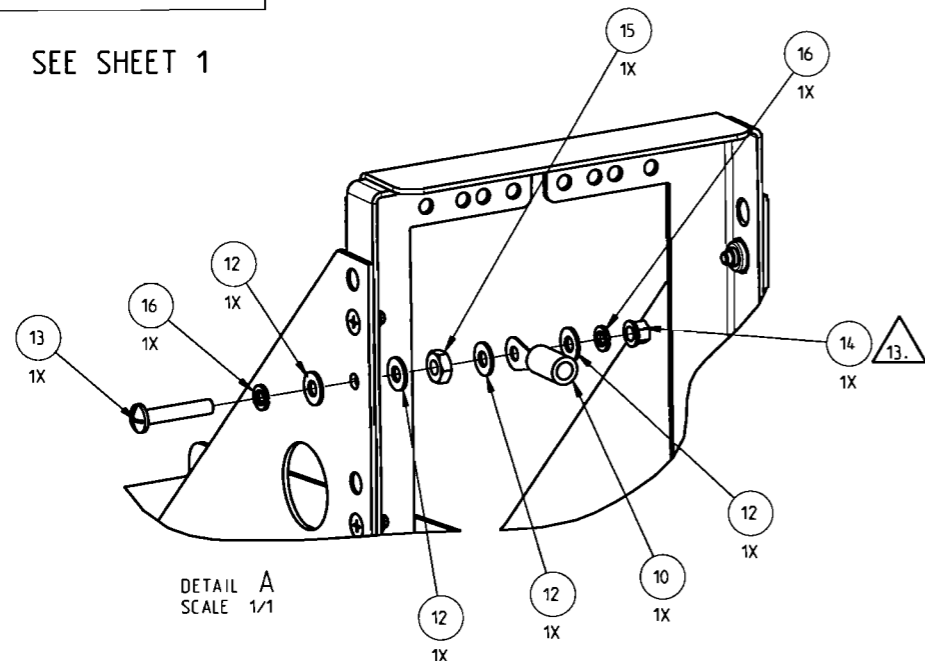
SH 2 REV C

1

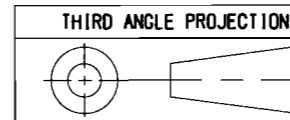
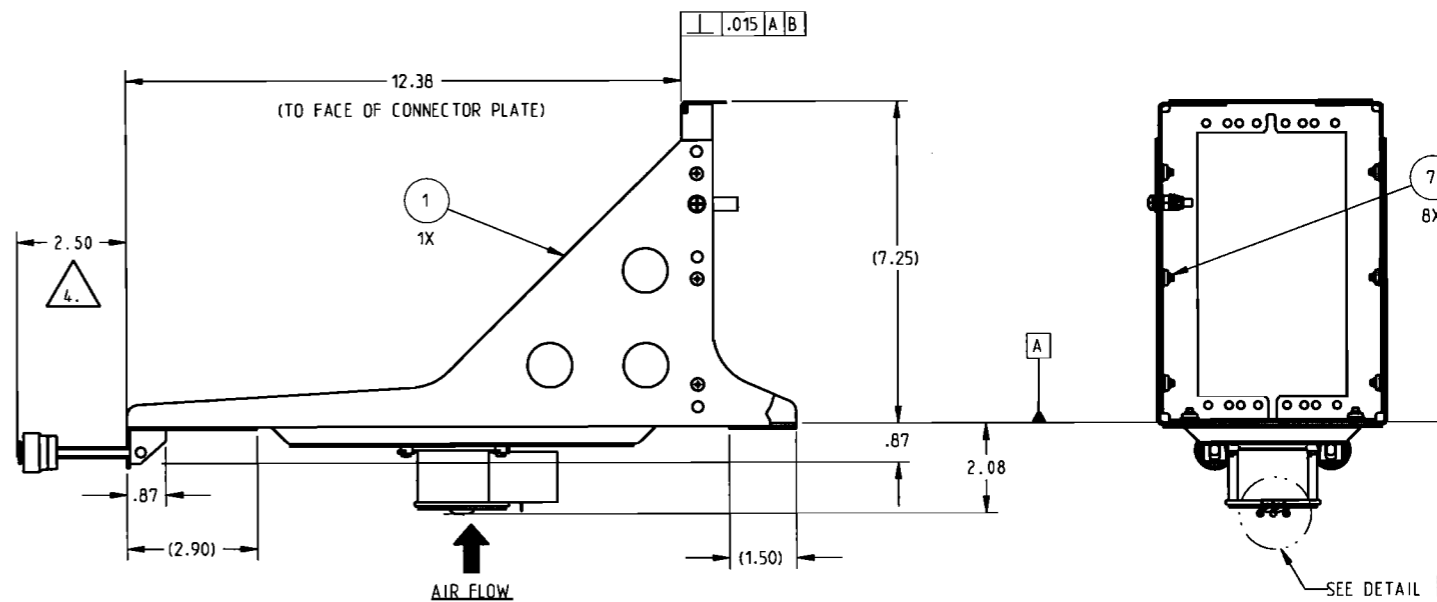
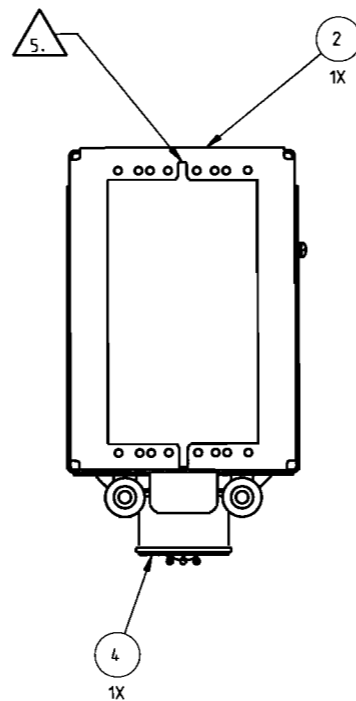
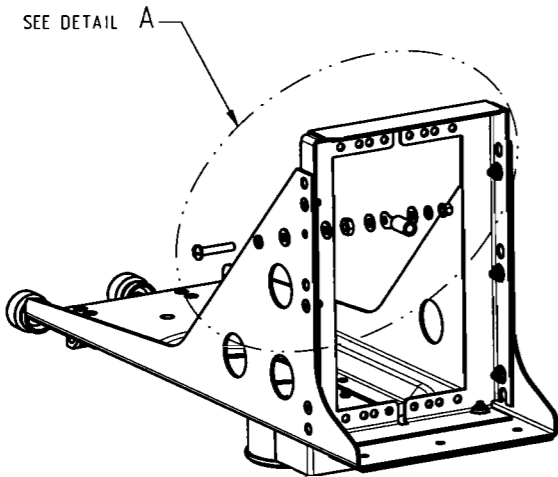
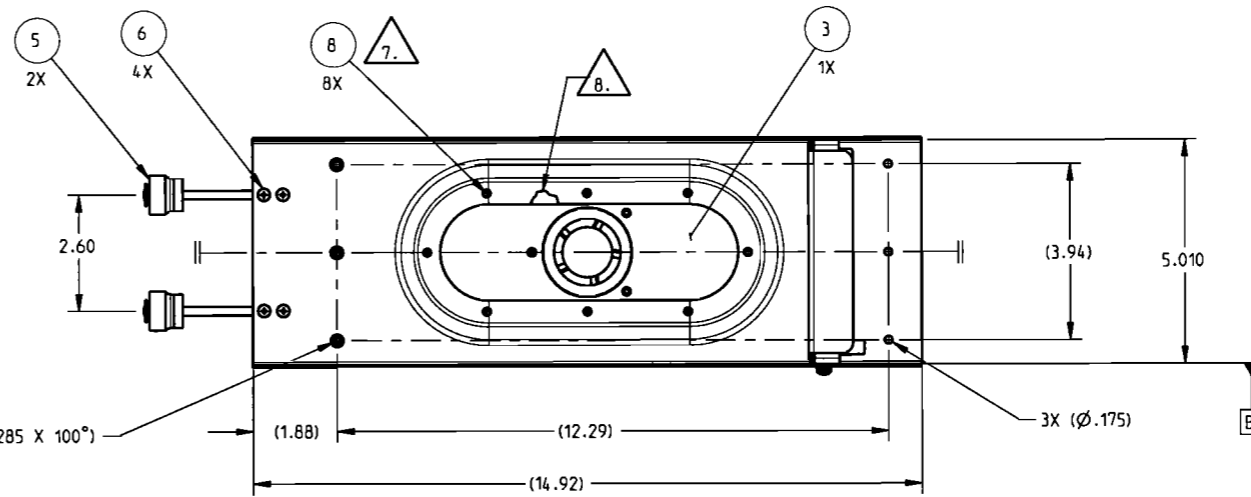
This print and associated documents and the contained information are the confidential property of ELECTRONIC CABLE SPECIALISTS. Disclosure of, and/or reproduction of, all or part thereof or manufacture of any part from information contained on this print not specifically permitted by ELECTRONIC CABLE SPECIALISTS in writing is forbidden.

| REVISION HISTORY | | | | |
|------------------|------|-------------|------|----------|
| ZONE | REV. | DESCRIPTION | DATE | APPROVED |
| | C | SEE SHEET 1 | | |

NOTES: SEE SHEET 1



DETAIL A
SCALE 1/1



CAD GENERATED DOCUMENT
ANY CHANGES TO THIS DOCUMENT
MUST BE SUBMITTED TO THE
DESIGN/DRAFTING DEPARTMENT
FOR PROPER UPDATE

| | |
|---|-----------------|
| ELECTRONIC CABLE SPECIALISTS FRANKLIN, WI 53132 PHONE: (414) 421-5300 | |
| SIZE D | SCALE 1/2 |
| CASE CODE 66197 | LEVEL C/A |
| DWG NO. 200-84922-101 | SHEET 2 of 2 |

8

7

6

5

4

3

2

1

NAME: LARRY HECKEL OBJECT: 84922-101-2 DATE: 07-Jan-10 14:16:56