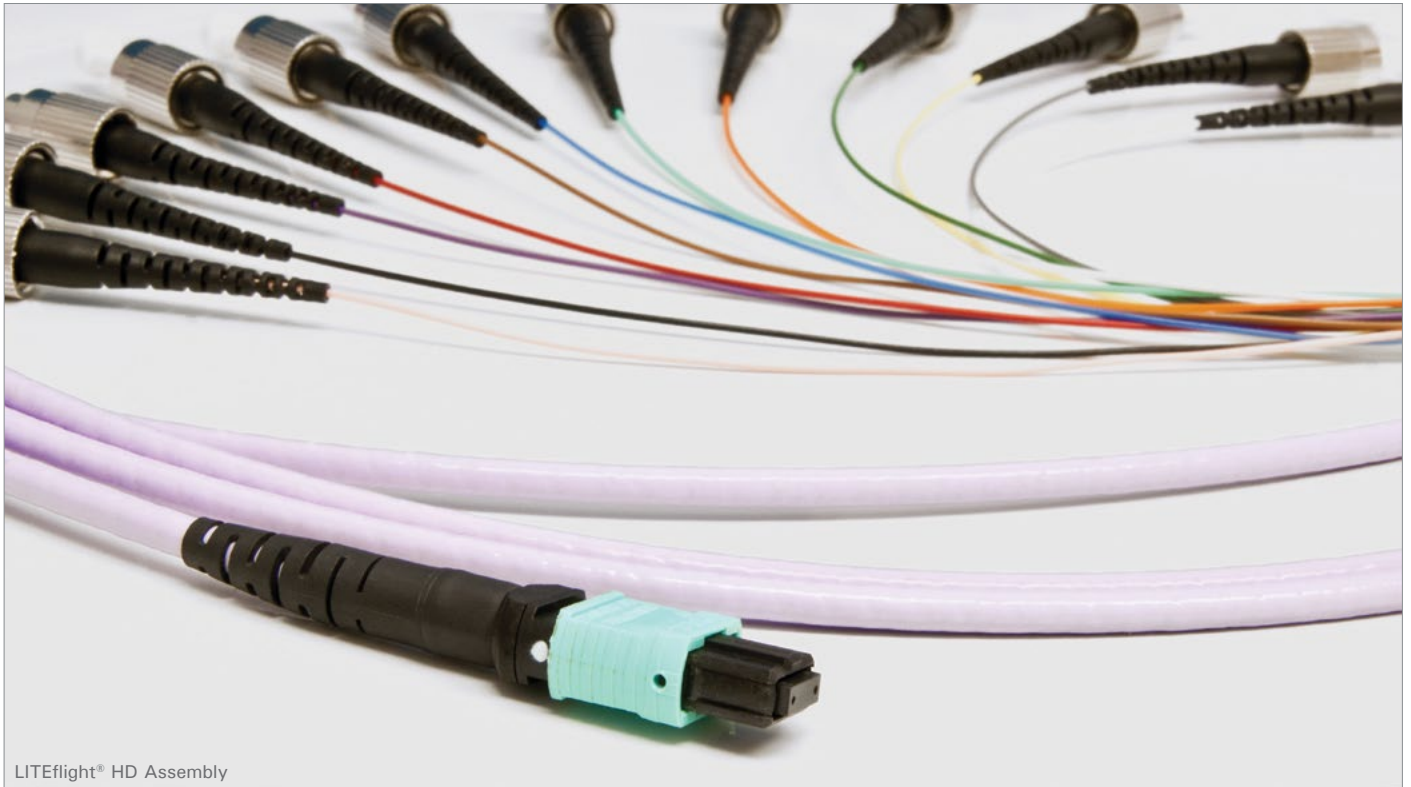
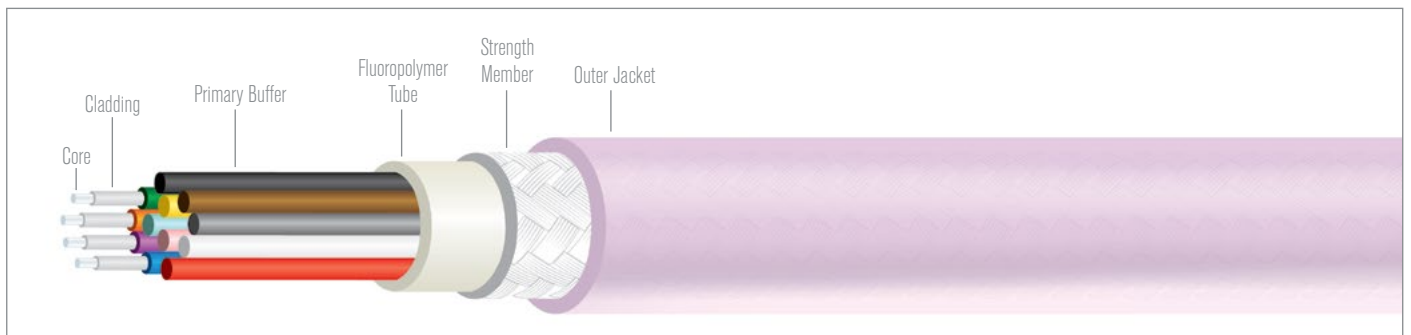


LITEflight® HD

Fiber Optics/ 12, 24 & 48 Configurations



LITEflight® HD Assembly



INTRODUCTION

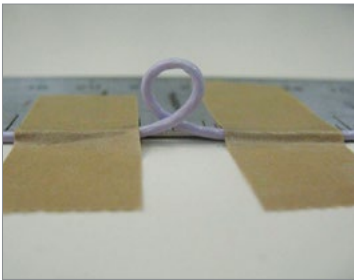
CarlisleIT LITEflight® HD (High Density) fiber optic cables build on the industry leading performance of all CarlisleIT fiber cable products with a cable designed for compatibility with cutting edge fiber optic connector designs. LITEflight® HD cables offer a multi-channel fiber cable in the smallest package, compatible with industry leading MPO connector interfaces and emerging multi-fiber termination connectors. LITEflight® HD cables offer system designers maximum interconnect density with cable designed and tested to perform in the harshest environments.

KEY FEATURES

- » FAR 25 Flame Compliance
- » Low Smoke & Toxicity
- » No preferential bend axis (360°)
- » Broad Temperature Range: -65°C to +150°C
- » Designed for Harsh Aerospace Environments
- » Rugged for Severe Installation Requirements



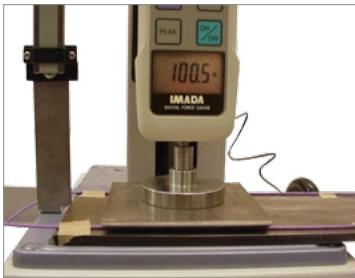
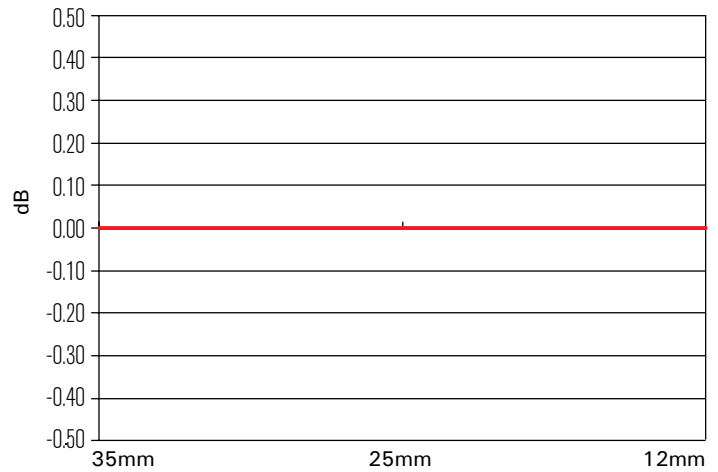
PERFORMANCE EXAMPLES



Radius	dBΔ
35mm	0.00
25mm	0.00
12mm	0.00

— Optical Loss vs. Bend Radius (mm)

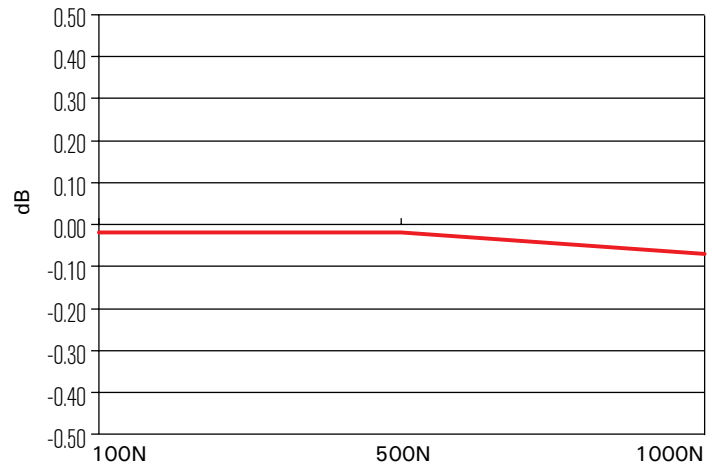
Straight line indicates no optical loss on the following bend radius tests.



N	dBΔ
100N	0.00
500N	0.00
1000N	-0.05

N is Newton

— Optical Loss vs. Crush Force (N)



PART NUMBER GUIDE

NFO(HD) - X - Y - Z*

X	Temperature Rating
125	125°C Rated Acrylate
150	150°C Rated Acrylate
260	260°C Rated Polyimide

Y	Fiber Type
1	250um Buffered 62.5/125 Multimode
3M3	250um Buffered 50/125 Multimode OM3*
3M4	250um Buffered 50/125 Multimode OM4*
5B	250um Buffered Singlemode Bend-Insensitive

Z*	Fiber Count*
12	12
24	24
48	48

* Other fiber counts available.

Base Part Number