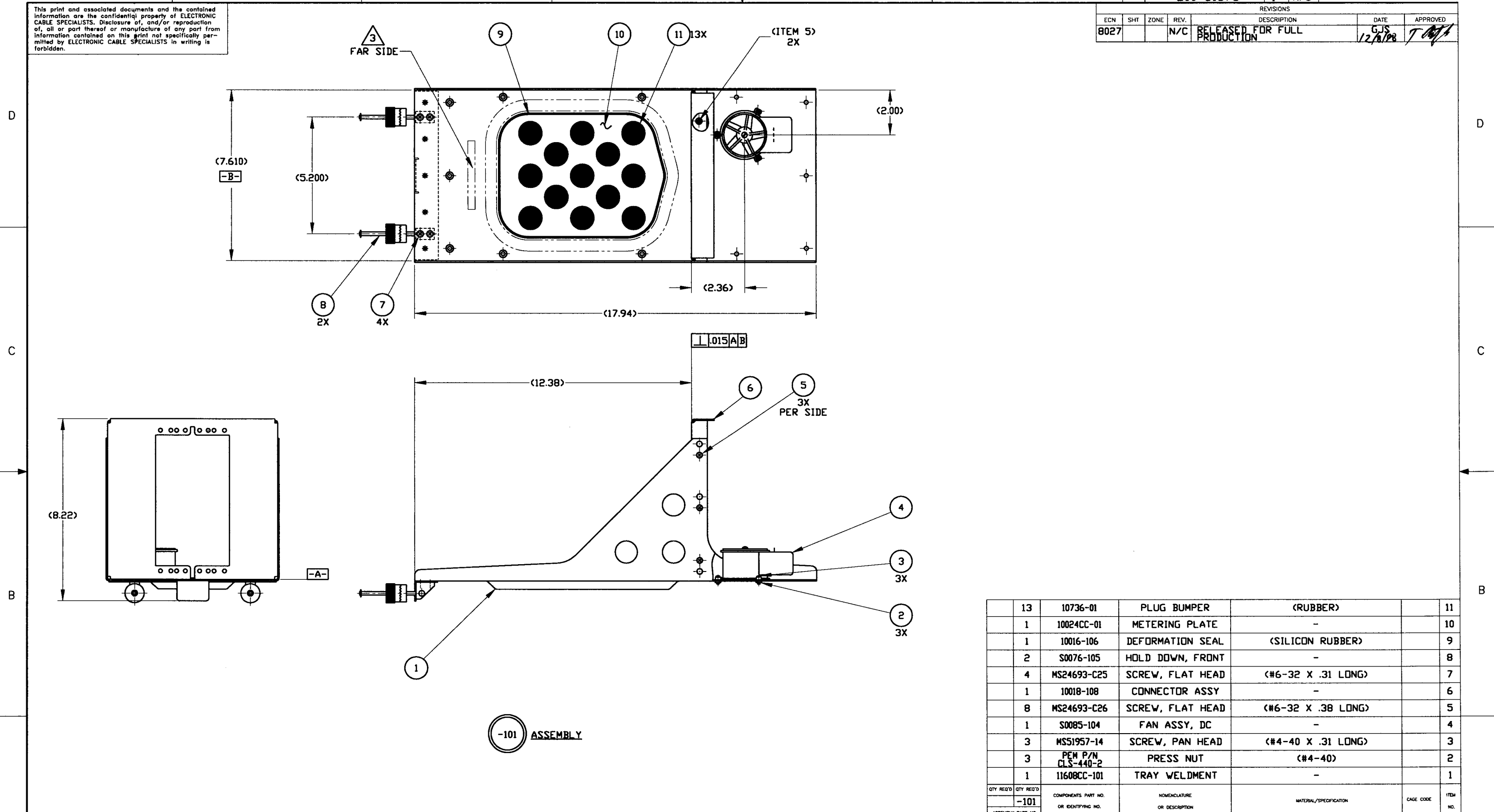


This print and associated documents and the contained information are the confidential property of ELECTRONIC CABLE SPECIALISTS. Disclosure of, and/or reproduction of, all or part thereof or manufacture of any part from information contained on this print not specifically permitted by ELECTRONIC CABLE SPECIALISTS in writing is forbidden.

ECN	SHT	ZONE	REV.	DESCRIPTION	DATE	APPROVED
8027			N/C	RELEASED FOR FULL PRODUCTION	12/1/98	GJS



-101 ASSEMBLY

QTY REQ'D	QTY REQ'D	COMPONENTS PART NO. OR IDENTIFYING NO.	NOMENCLATURE OR DESCRIPTION	MATERIAL/SPECIFICATION	CAGE CODE	ITEM NO.
	13	10736-01	PLUG BUMPER	(RUBBER)		11
	1	10024CC-01	METERING PLATE	-		10
	1	10016-106	DEFORMATION SEAL	(SILICON RUBBER)		9
	2	S0076-105	HOLD DOWN, FRONT	-		8
	4	MS24693-C25	SCREW, FLAT HEAD	(#6-32 X .31 LONG)		7
	1	10018-108	CONNECTOR ASSY	-		6
	8	MS24693-C26	SCREW, FLAT HEAD	(#6-32 X .38 LONG)		5
	1	S0085-104	FAN ASSY, DC	-		4
	3	MS51957-14	SCREW, PAN HEAD	(#4-40 X .31 LONG)		3
	3	PEM P/N CLS-440-2	PRESS NUT	(#4-40)		2
	1	11608CC-101	TRAY WELDMENT	-		1

- 3.** IDENTIFY WITH ECS P/N AND LOT# PER EP210.
- 2.** DESIGNED TO MEET THE APPLICABLE REQUIREMENTS OF THE FOLLOWING:
 A: ARINC 600-9: 6 MCU
 B: RTCA/DO-160C ENV. CAT. A1-BABXXXXXXXXXXXXXXXXXX
- 1.** DIMENSIONS AND TOLERANCES PER ANSI Y14.5M-1982.

NOTES: UNLESS OTHERWISE SPECIFIED

THIRD ANGLE PROJECTION

CAD GENERATED DOCUMENT
 ANY CHANGES TO THIS DOCUMENT MUST BE SUBMITTED TO THE DESIGN/DRAFTING DEPARTMENT FOR PROPER UPDATE.

COMP/ASSY PART NO.	QTY REQ'D	FINAL/NEXT DWG	PROJECT NO.	PRODUCTION	QUALITY ASSURANCE	ADDITIONAL APPROVALS	DATE
-101	1	6413	98-1743				

UNLESS OTHERWISE SPECIFIED DIMENSIONS ARE IN INCHES TOLERANCES ARE:

FRACTIONS	DECIMALS	ANGULAR
±	± .03	± 1°
	± .010	

DO NOT SCALE DRAWING

TREATMENT: _____

FINISH: _____

SIMILAR TO: _____ ACT. WT: _____ CALC. WT: _____

CONTRACT NO. _____

DRAWN: G. STEFFEN DATE: 12/3/98

CHECKED: M. BOHMAN DATE: 12/1/98

DESIGNED: G. STEFFEN DATE: 12/1/98

PROJECT: _____ DATE: 12/1/98

MANUFACTURING: _____ DATE: 12/1/98

ENGINEERING: _____ DATE: 12/1/98

ELECTRONIC CABLE SPECIALISTS
 FRANKLIN, WI 53132
 PHONE: (414) 421-5300

TITLE: **TRAY ASSEMBLY, 6 MCU**

SIZE: D 66197 CAGE CODE: A LEVEL: A DWG NO.: 200-81676

SCALE: 1/2 EFFECTIVITY: _____ SHEET: 1 OF 1