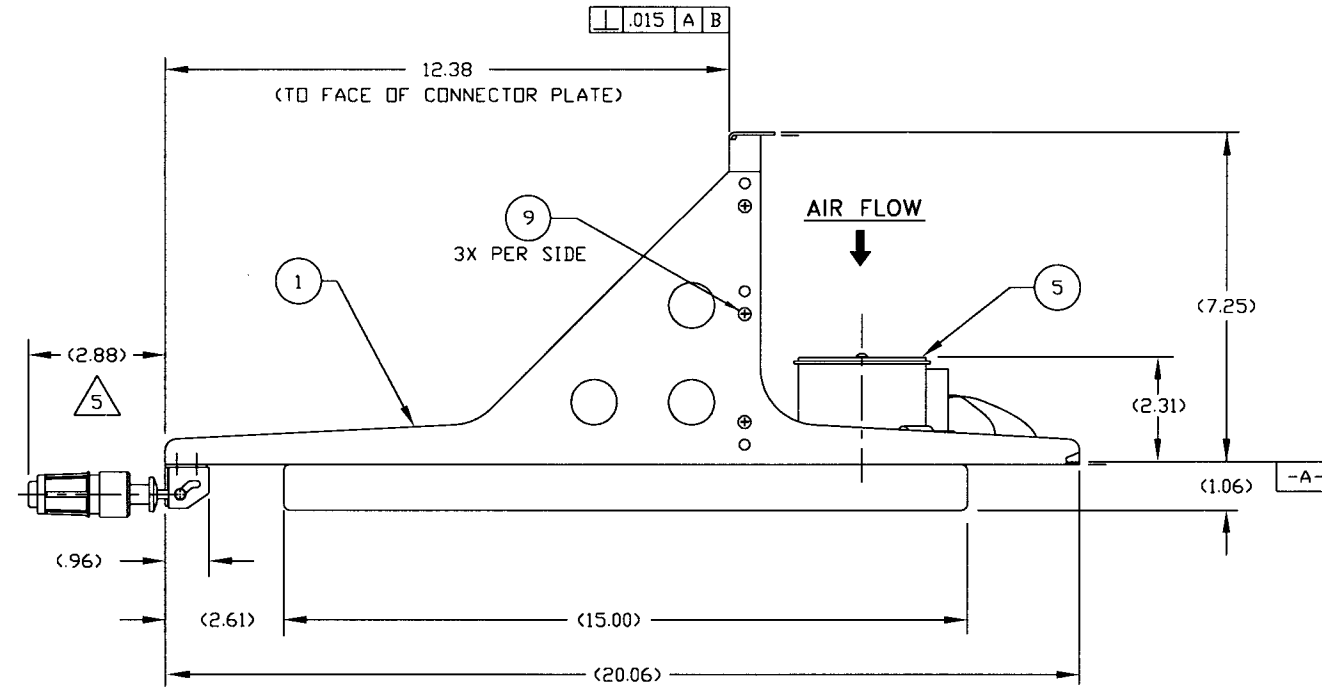
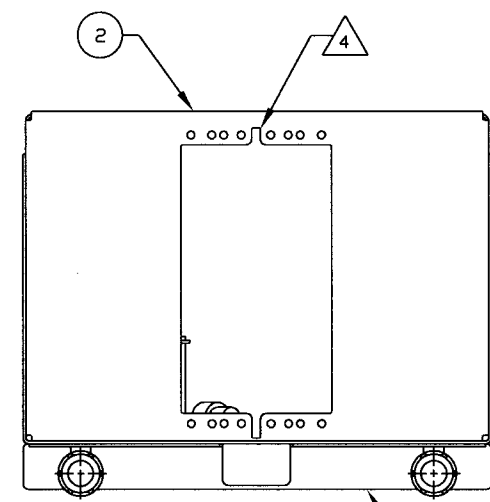
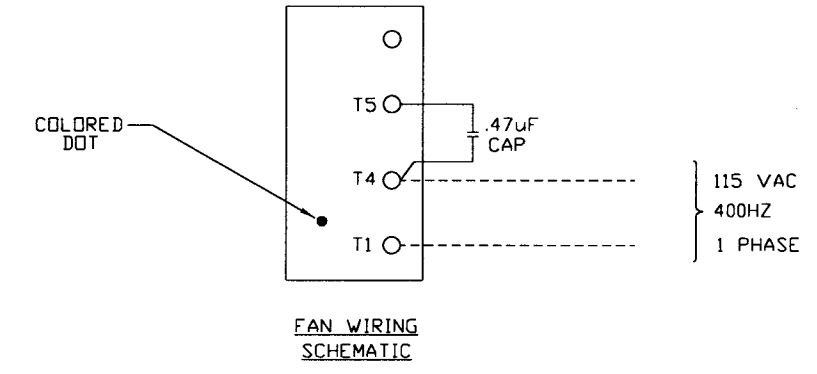
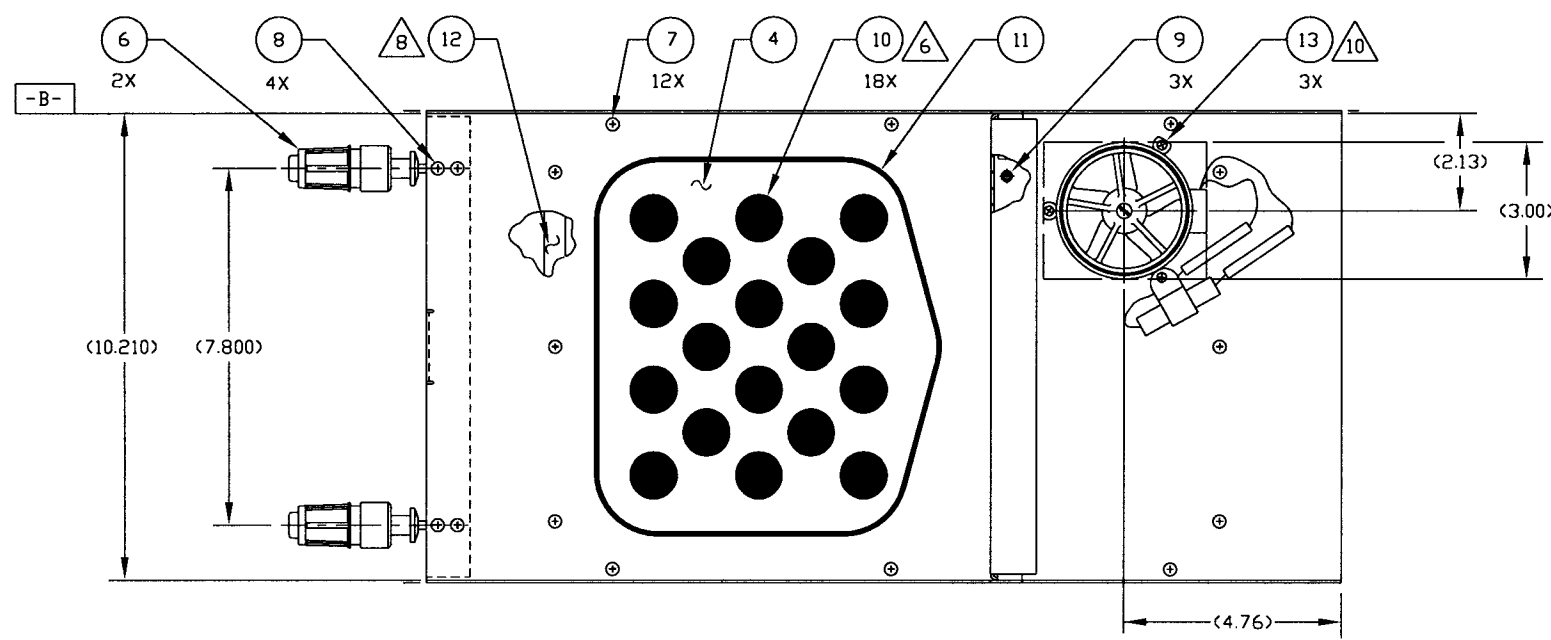


This print and associated documents and the contained information are the confidential property of ELECTRONIC CABLE SPECIALISTS. Disclosure of, and/or reproduction of, all or part thereof or manufacture of any part from information contained on this print not specifically permitted by ELECTRONIC CABLE SPECIALISTS in writing is forbidden.

REVISIONS						
ECN	SHT.	ZONE	REV.	BRIEF DESCRIPTION (SEE ECN FOR FULL DESCRIPTION)	DATE	APPROVED
4693			N/C	RELEASED FOR FULL PRODUCTION	10/10/96	K RAIHALA
5328		P/L F/D D5	A	CHNG'D QTY OF ITEM 7 WAS 8 ADDED 4 SCREWS CHNG'D CALLOUT WAS 8X	MJB 7/23/99	J SHAW
9824			B	ADDED NOTE 9	PS 10/8/99	L HECKEL
15334		B4 C4	C	CHNG'D DIM (2.31) WAS (2.37) DELETED DIM (3.58)	JTS 2/20/02	B MATHUR
36957		P/L NTS C2	D	ADDED ITEM 13. ADDED NOTE 10 & 11. UPDATED SCHEMATIC.	LJH 5/12/09	<i>CB</i> <i>AM</i>



- 11. ALTERNATE PART NO. M45938/7-2.
 - 10. ASSEMBLE PLENUM TO TRAY ONLY AFTER INSTALLING ALL PRESS NUTS ON TRAY.
 - 9. IDENTIFY WITH ECS P/N AND LOT #, PER EP 210
 - 8. APPLY (12) AROUND SCREW HOLES & CONTACT SURFACES AT ASSEMBLY TO PROVIDE A SEAL BETWEEN (1) & (3).
 - 7. ALTERNATE PART NO: DOW CORNING P/N RTV-732CLR.
 - 6. REMOVE ALL (18) PLUGS FROM TRAY AT TIME OF INSTALLATION.
 - 5. MAXIMUM EXTENSION WHEN LRU IS SECURELY FASTENED TO TRAY ASSEMBLY.
 - 4. UNIVERSAL CONNECTOR CUT-OUT FOR ARINC 600; SIZE 1, 2 OR 3.
 - 3. FINISH: (CLEAR CHEM FILM PER MIL-C-5541, CLASS 3).
 - 2. DESIGNED TO MEET THE APPLICABLE REQUIREMENTS OF THE FOLLOWING:
 - A: ARINC 600-9: 8 MCU, LEVEL 1 COOLING
EXCEPTIONS AND LIMITATIONS TO ARINC 600-9:
1. MAXIMUM STEADY-STATE HEAT DISSIPATION: 250-360W
 - B: ENVIRONMENTAL CONDITIONS RTCA/DO-160C ENV. CAT. D2-BABXXXXXXXXXXXXXXXXXX.
EXCEPTIONS AND LIMITATIONS TO RTCA/DO-160C
1. MAX. OPERATING ALTITUDE: 51,000 ft.
2. MAX COOLANT AIR BULK INLET TEMP 51,000 ft: 15°C
3. NOT RECOMMENDED FOR INSTALLATION IN PRESSURIZED AREAS.
 - 1. DIMENSIONS AND TOLERANCES PER ANSI Y14.5M-1982.
- NOTES: UNLESS OTHERWISE SPECIFIED

QTY REQ'D	COMPONENTS PART NO. OR IDENTIFYING NO.	NOMENCLATURE OR DESCRIPTION	MATERIAL/SPECIFICATION	CAGE CODE	ITEM NO.
3	FE-440-EF	PRESS NUT, SELF-LOCKING	(#4-40, CRES)		13
A/R	DOW CORNING RTV3145, CLR	ADHESIVE SEALANT	(SILICONE RUBBER)	71984	12
1	10016-108	DEFORMATION SEAL ASSY, 8 MCU	(SILICONE RUBBER)		11
18	10736-01	PLUG BUMPER	(RUBBER)		10
9	MS24693-C26	SCREW, FLAT HEAD	(#6-32 X .38 LONG)		9
4	MS24693-C25	SCREW, FLAT HEAD	(#6-32 X .31 LONG)		8
12	MS24693-C24	SCREW, FLAT HEAD	(#6-32 X .25 LONG)		7
2	10344-101	HOLD DOWN, FRONT INSERTION/EXTRACTION			6
1	S0085-116	FAN ASSEMBLY, AC			5
1	10035CC-01	METERING PLATE 8 MCU	(.040 AL ALLOY 5052 OR 6061)		4
1	S0089CC-102	PLENUM ASSY, 8 MCU W/ BAFFLE	(.040 AL ALLOY 6061)		3
1	10018CC-110	CONNECTOR PLATE ASSY, 8 MCU	(.063 AL ALLOY 6061)		2
1	S0077CC-508	TRAY WELDING ASSY, 8 MCU	(.063 AL ALLOY 6061)		1

<p>THIRD ANGLE PROJECTION</p>		<p>WEIGHTS 4.4 lbs</p>		<p>UNLESS OTHERWISE SPECIFIED DIMENSIONS ARE IN INCHES TOLERANCES ARE:</p> <p>FRACTIONS DECIMALS ANGULAR XXX .03 2° XXX .010 XXX .010</p> <p>DO NOT SCALE DRAWING</p>		<p>CONTRACT NO.</p> <p>DRW: K. SOMMERS DATE: 9/17/96</p> <p>CHECKED: K. RAIHALA DATE: 10/10/96</p> <p>DESIGNED: K. RAIHALA DATE: 10/10/96</p> <p>PROJECT: K. RAIHALA DATE: 10/10/96</p> <p>MANUFACTURING DATE:</p> <p>ENGINEERING: M. RIECK DATE: 10/10/96</p>		<p>ELECTRONIC CABLE SPECIALISTS FRANKLIN, WI 53132 PHONE: (414) 421-5300</p>		
<p>CAD GENERATED DOCUMENT ANY CHANGES TO THIS DOCUMENT MUST BE SUBMITTED TO THE DESIGN/DRAFTING DEPARTMENT FOR PROPER UPDATE</p>		<p>-101 --- FINAL 95-1269 PRODUCTION</p>		<p>QUALITY ASSURANCE</p>		<p>SCALE 1/2 EFFECTIVITY:</p>		<p>TITLE TRAY ASSY, 8 MCU S/L W/LEFT REAR HIGH ALTITUDE FAN</p>		
COMP/ASSY PART NO.	QTY REQ'D	NEXT/FINAL DWG	PROJECT NO.	DATE	ACT. WT	CALC. WT	SIZE	CAGE CODE	DWG NO.	
-101	---	---	95-1269	10/10/96	---	---	D 66197	C/A	6284	
<p>APPLICATION</p>							<p>SCALE 1/2 EFFECTIVITY:</p>		<p>SHEET 1 OF 1</p>	