

| REVISION HISTORY | | DESCRIPTION | DATE | APPROVED |
|------------------|-----|--|-----------------|--------------------|
| 19223 | X | RELEASED FOR CUSTOMER APPROVAL. | 9/27/02 | B MATHUR |
| | N/C | RELEASED FOR FIRST ARTICLE INSP. | 2/11/04 | P JOBE |
| 35119 | A | ADDED NOTE 8. ADDED CG TO DRAWING W/ DIMS. ADDED CALC WGT. | LJH 12/15/08 | J.BEHLENDORF |
| 54695 | B | REVISED GTDLS ADDED INSERTION/EXTRACTION NOTE UPDATED NOTE 3 ADDED NOTE 9 1.20 DIM WAS 1.195 | TJR 2/06/15 | <i>[Signature]</i> |

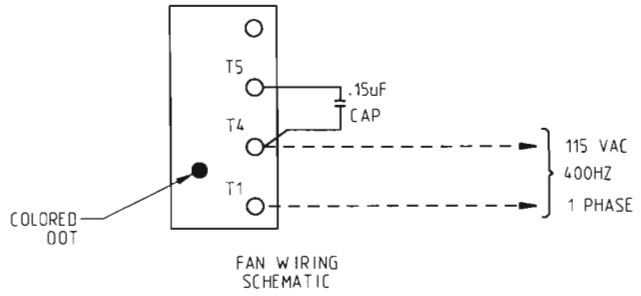
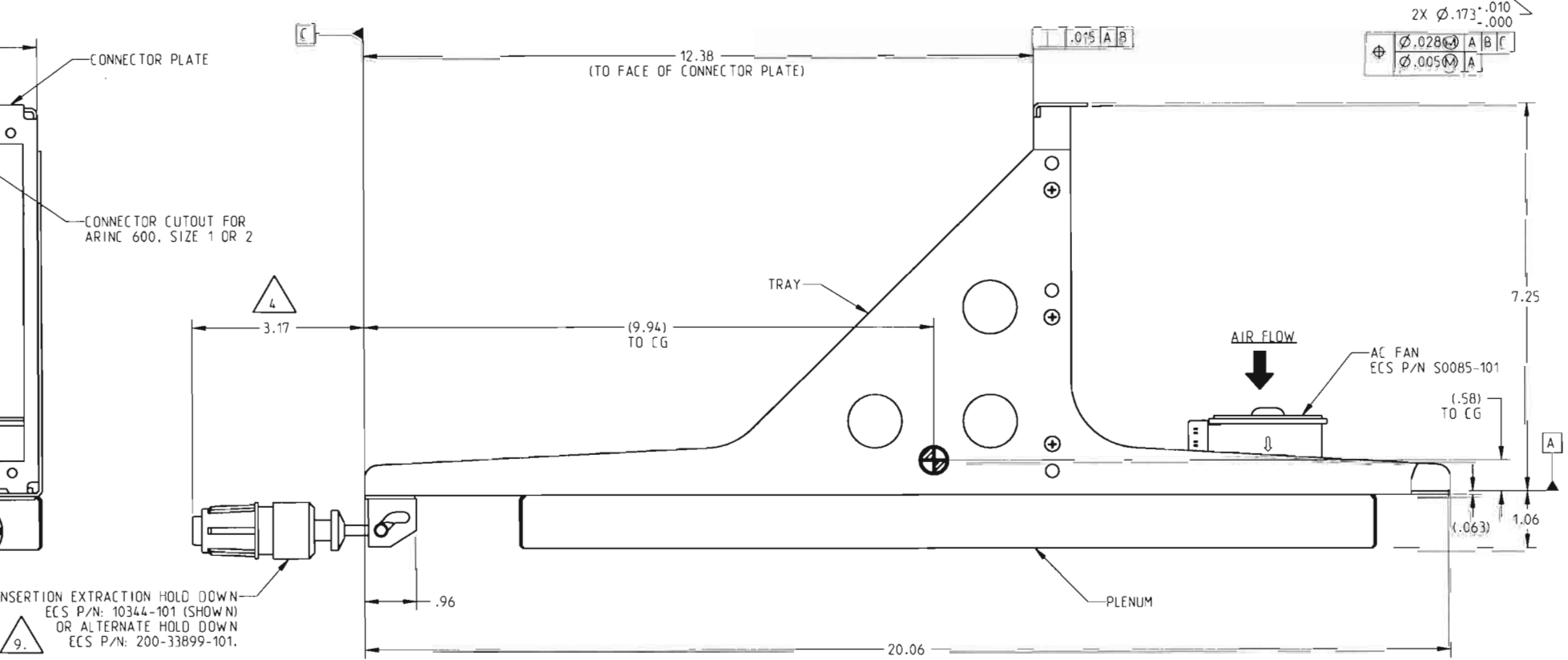
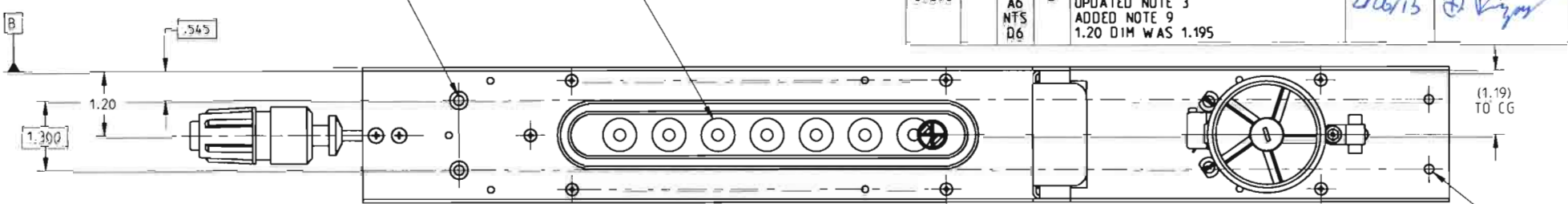
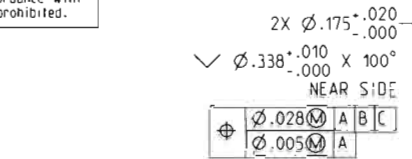
This print and associated documents and the contained information are the confidential property of ELECTRONIC CABLE SPECIALISTS. Disclosure of, and/or reproduction of, all or part thereof or manufacture of any part from information contained on this print not specifically permitted by ELECTRONIC CABLE SPECIALISTS in writing is forbidden.

**** EXPORT CONTROLLED DOCUMENT - EAR ****
The information in this document is subject to the Export Controls in Accordance with the Export Administration Regulations. Diversion Contrary to U.S. Law is prohibited.

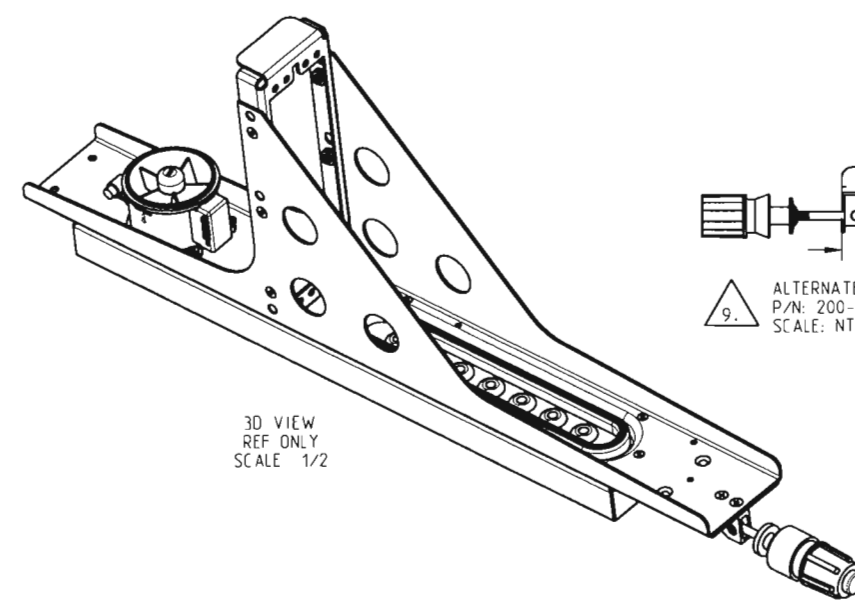
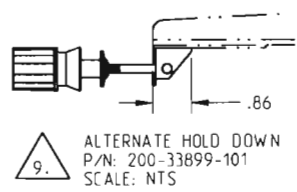
NOTES: UNLESS OTHERWISE SPECIFIED

GENERAL NOTES:

- DIMENSIONS AND TOLERANCES PER ASME Y14.5M-1994.
- DESIGNED TO MEET THE APPLICABLE REQUIREMENTS OF THE FOLLOWING:
 - ARINC 600-13; 2 MCU
 - RTCA/DO-160D ENVIRONMENTAL TEST CONDITIONS:
 - TEMPERATURE: CAT A2
 - ALTITUDE: CAT A2
 - TEMP VARIATION: CAT B
 - HUMIDITY: CAT A
 - OPERATIONAL SHOCK: CAT B
 - CRASH SAFETY: SUSTAINED, TABLE 7-1, FIXED WING TRANSPORT A/C, RANDOM ORIENTATION
 - VIBRATION: CAT S, CURVE B2
- TRAY, PLENUM AND CONNECTOR PLATE FINISH: CLEAR CHEM FILM PER MIL-DTL-5541, TYPE 11, CLASS 3.
- MAXIMUM EXTENSION WHEN LRU IS SECURELY FASTENED TO TRAY ASSEMBLY.
- REMOVE METERING PLUGS FROM TRAY PRIOR TO INSTALLING LRU.
- FOR PRESSURIZED APPLICATION ONLY. NOT RECOMMENDED FOR INSTALLATION IN UNPRESSURIZED AREAS.
- ELECTRICAL SPECIFICATIONS (FAN):
 - 115V AC, 400 HZ, AC FAN
 - CURRENT 0.11 AMPS (NOM)
- APPROXIMATE LOCATION OF CENTER OF GRAVITY SHOWN AS
- SEE ALTERNATE HOLD DOWN DETAIL VIEW.



INSERTION EXTRACTION HOLD DOWN
ECS P/N: 10344-101 (SHOWN)
OR ALTERNATE HOLD DOWN
ECS P/N: 200-33899-101.



ECS PART NO.: 200-91002-101

PRODUCT SPECIFICATION DRAWING

| | | | | | | | | | |
|---|--|----------------------|--|---|--|--------------|--|---|--|
| THIRD ANGLE PROJECTION | | WEIGHTS | | UNLESS OTHERWISE SPECIFIED, DIMENSIONS ARE IN INCHES. | | CONTRACT NO. | | ECS ELECTRONIC CABLE SPECIALISTS FRANKLIN, WI 53132 PHONE: (414) 421-5300 | |
| | | STRESS | | DECIMALS ANGULAR | | DRAWN | | DATE | |
| CAD GENERATED DOCUMENT ANY CHANGES TO THIS DOCUMENT MUST BE SUBMITTED TO THE DESIGN/DRAFTING DEPARTMENT FOR PROPER UPDATE | | - | | .X ± .01 .1 1.0 .XX ± .03 .X ± .03 .XXX ± 0.010 (DO NOT SCALE DRAWINGS) | | D ARFSTEN | | 27-Sep-02 | |
| QUALITY CONTROL | | PRODUCTION | | TREATMENT | | CHECKED | | DATE | |
| - | | - | | - | | C BELL | | 2/9/04 | |
| DESIGNED | | DESIGNED | | DESIGNED | | B MATHUR | | 1/28/08 | |
| B MATHUR | | B MATHUR | | B MATHUR | | B MATHUR | | 2/10/04 | |
| DATE | | DATE | | DATE | | DATE | | DATE | |
| 2/10/04 | | 2/10/04 | | 2/10/04 | | 2/10/04 | | 2/10/04 | |
| SURF AREA INCHES | | ACT WT | | CALC WT LBS | | SCALE | | SHEET | |
| 575.602 | | - | | 1.735 | | D 66197 M | | 1 of 1 | |
| APPLICATION | | ADDITIONAL APPROVALS | | DATE | | ECS-201531 | | | |